

β-Tubulin Mouse mAb

Catalog No.: AC021

66 Publications

Basic Information

Observed MW

50kDa

Calculated MW

50kDa

Category

Loading control antibody

Applications

ELISA, WB, IHC-P, IF/ICC, IP

Cross-Reactivity

Human, Mouse, Rat, Hamster, Monkey, Goat, Chlamydomonas Reinhardtii

CloneNo number

AMC0498

Background

This gene encodes a beta tubulin protein. This protein forms a dimer with alpha tubulin and acts as a structural component of microtubules. Mutations in this gene cause cortical dysplasia, complex, with other brain malformations 6. Alternative splicing results in multiple splice variants. There are multiple pseudogenes for this gene on chromosomes 1, 6, 7, 8, 9, and 13.

Recommended Dilutions

WB	1:5000 - 1:10000
IHC-P	1:50 - 1:200
IF/ICC	1:50 - 1:200
IP	0.5ug-4ug antibody for 200ug-400ug extracts of whole cells

Immunogen Information

Gene ID

203068

Swiss Prot

P07437

Immunogen

Recombinant protein of human β-Tubulin

Synonyms

M40; TUBB1; TUBB5; CDCBM6; CSCSC1; OK/SW-cl.56; β-Tubulin

Contact

☎	400-999-6126
✉	cn.market@abclonal.com.cn
🌐	www.abclonal.com.cn

Product Information

Source

Mouse

Isotype

IgG1

Purification

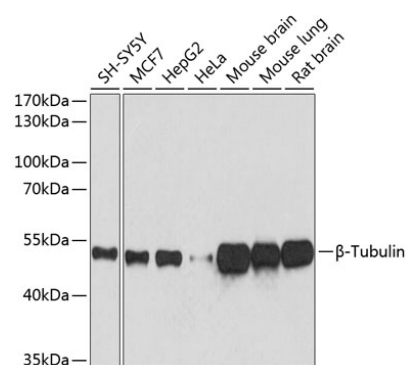
Affinity purification

Storage

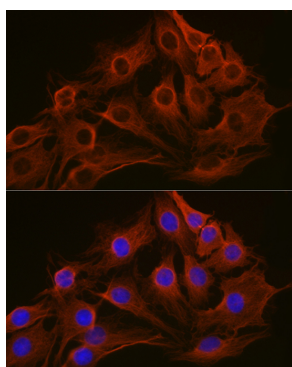
Store at -20°C. Avoid freeze / thaw cycles.

Buffer: PBS with 0.02% sodium azide, 1% BSA, 50% glycerol, pH7.3.

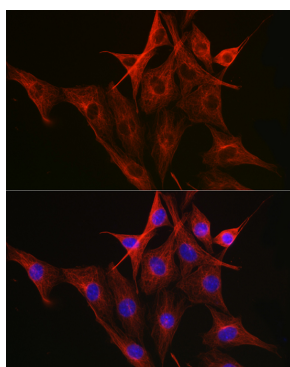
Validation Data



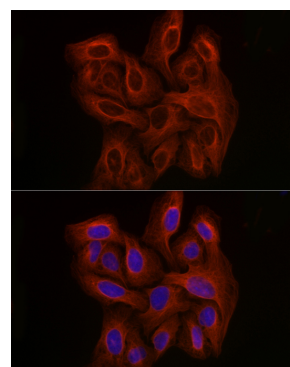
Western blot analysis of various lysates using β -Tubulin Mouse mAb (AC021) at 1:5000 dilution. Secondary antibody: HRP Goat Anti-Mouse IgG (H+L) (AS003) at 1:10000 dilution. Lysates/proteins: 25 μ g per lane. Blocking buffer: 3% nonfat dry milk in TBST. Detection: ECL Basic Kit (RM00020). Exposure time: 10s.



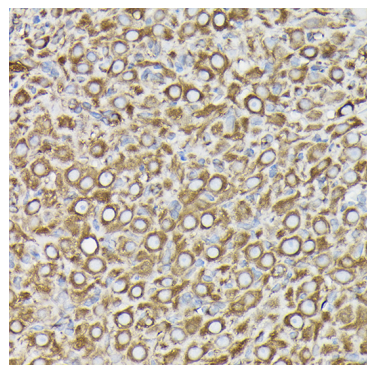
Immunofluorescence analysis of C6 cells using β -Tubulin Mouse mAb (AC021) at dilution of 1:100 (40x lens). Blue: DAPI for nuclear staining.



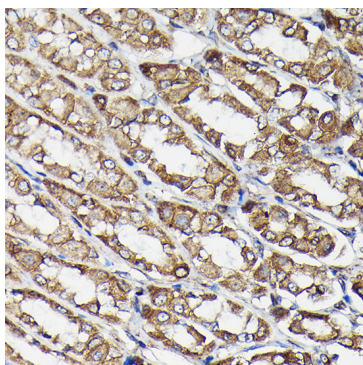
Immunofluorescence analysis of NIH-3T3 cells using β -Tubulin Mouse mAb (AC021) at dilution of 1:100 (40x lens). Blue: DAPI for nuclear staining.



Immunofluorescence analysis of U-2 OS cells using β -Tubulin Mouse mAb (AC021) at dilution of 1:100 (40x lens). Blue: DAPI for nuclear staining.



Immunohistochemistry analysis of β -Tubulin in paraffin-embedded rat ovary using β -Tubulin Mouse mAb (AC021) at dilution of 1:100 (40x lens). Perform high pressure antigen retrieval with 10 mM citrate buffer pH 6.0 before commencing with IHC staining protocol.



Immunohistochemistry analysis of β -Tubulin in paraffin-embedded rat stomach using β -Tubulin Mouse mAb (AC021) at dilution of 1:100 (40x lens). Perform high pressure antigen retrieval with 10 mM citrate buffer pH 6.0 before commencing with IHC staining protocol.