

Alpha-tubulin (ubiquitous) chain Rabbit pAb

Catalog No.: AC024

1 Publications

Basic Information

Observed MW

52kDa

Calculated MW

50kDa

Category

Loading control antibody

Applications

WB,IHC-P,IF/ICC

Cross-Reactivity

Human, Mouse, Rat

Background

Enables double-stranded RNA binding activity and ubiquitin protein ligase binding activity. Predicted to be involved in microtubule cytoskeleton organization and mitotic cell cycle. Predicted to act upstream of or within cellular response to interleukin-4. Located in microtubule.

Recommended Dilutions

| | |
|--------|---------------|
| WB | 1:100 - 1:500 |
| IHC-P | 1:50 - 1:200 |
| IF/ICC | 1:50 - 1:200 |

Immunogen Information

Gene ID

10376

Swiss Prot

P68363

Immunogen

Recombinant fusion protein containing a sequence within amino acids 1-80 of human Alpha-tubulin (ubiquitous) chain (NP_006073.2).

Synonyms

K-ALPHA-1; Alpha-tubulin (ubiquitous) chain

Contact

| | |
|---|---------------------------|
| ☎ | 400-999-6126 |
| ✉ | cn.market@abclonal.com.cn |
| 🌐 | www.abclonal.com.cn |

Product Information

Source

Rabbit

Isotype

IgG

Purification

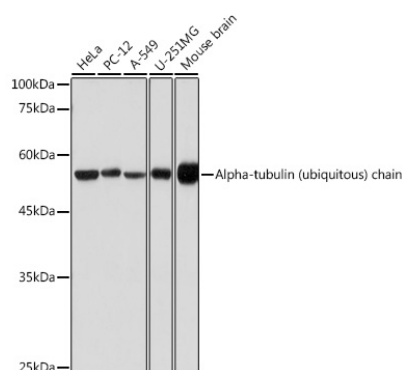
Affinity purification

Storage

Store at -20°C. Avoid freeze / thaw cycles.

Buffer: PBS with 0.01% thimerosal, 50% glycerol, pH7.3.

Validation Data



Western blot analysis of various lysates using Alpha-tubulin (ubiquitous) chain Rabbit pAb (AC024) at 1:500 dilution.

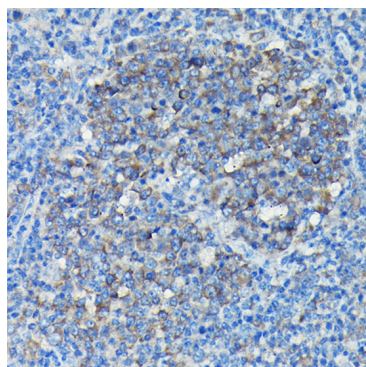
Secondary antibody: HRP Goat Anti-Rabbit IgG (H+L) (AS014) at 1:10000 dilution.

Lysates/proteins: 25µg per lane.

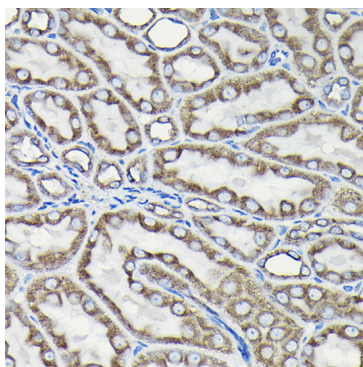
Blocking buffer: 3% nonfat dry milk in TBST.

Detection: ECL Basic Kit (RM00020).

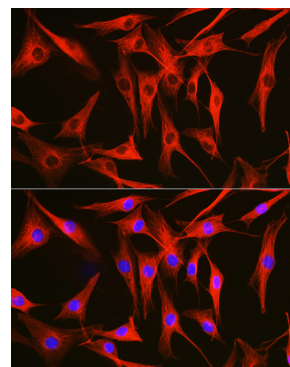
Exposure time: 1s.



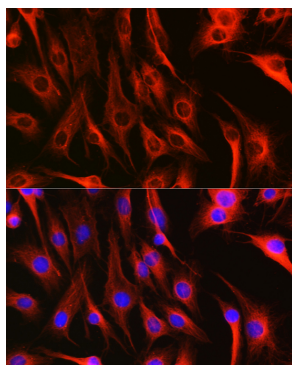
Immunohistochemistry analysis of Alpha-tubulin (ubiquitous) chain in paraffin-embedded Mouse spleen using Alpha-tubulin (ubiquitous) chain Rabbit pAb (AC024) at dilution of 1:50 (40x lens). Perform high pressure antigen retrieval with 10 mM citrate buffer pH 6.0 before commencing with IHC staining protocol.



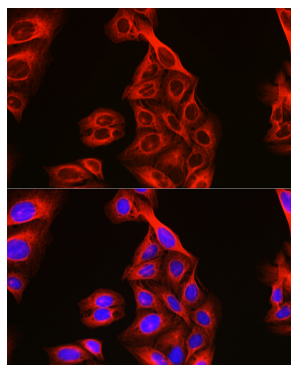
Immunohistochemistry analysis of Alpha-tubulin (ubiquitous) chain in paraffin-embedded Rat kidney using Alpha-tubulin (ubiquitous) chain Rabbit pAb (AC024) at dilution of 1:50 (40x lens). Perform high pressure antigen retrieval with 10 mM citrate buffer pH 6.0 before commencing with IHC staining protocol.



Immunofluorescence analysis of NIH/3T3 cells using Alpha-tubulin (ubiquitous) chain Rabbit pAb (AC024) at dilution of 1:100. Secondary antibody: Cy3 Goat Anti-Rabbit IgG (H+L) (AS007) at 1:500 dilution. Blue: DAPI for nuclear staining.



Immunofluorescence analysis of C6 cells using Alpha-tubulin (ubiquitous) chain Rabbit pAb (AC024) at dilution of 1:100. Secondary antibody: Cy3 Goat Anti-Rabbit IgG (H+L) (AS007) at 1:500 dilution. Blue: DAPI for nuclear staining.



Immunofluorescence analysis of U2OS cells using Alpha-tubulin (ubiquitous) chain Rabbit pAb (AC024) at dilution of 1:100. Secondary antibody: Cy3 Goat Anti-Rabbit IgG (H+L) (AS007) at 1:500 dilution. Blue: DAPI for nuclear staining.