

# GAPDH Mouse mAb (High Dilution)

Catalog No.: AC033

221 Publications

## Basic Information

**Observed MW**

36kDa

**Calculated MW**

36kDa

**Category**

Loading control antibody

**Applications**

ELISA, WB, IHC-P, IF/ICC

**Cross-Reactivity**

Human, Mouse, Rat

**CloneNo number**

AMC0062

## Background

This gene encodes a member of the glyceraldehyde-3-phosphate dehydrogenase protein family. The encoded protein has been identified as a moonlighting protein based on its ability to perform mechanistically distinct functions. The product of this gene catalyzes an important energy-yielding step in carbohydrate metabolism, the reversible oxidative phosphorylation of glyceraldehyde-3-phosphate in the presence of inorganic phosphate and nicotinamide adenine dinucleotide (NAD). The encoded protein has additionally been identified to have uracil DNA glycosylase activity in the nucleus. Also, this protein contains a peptide that has antimicrobial activity against *E. coli*, *P. aeruginosa*, and *C. albicans*. Studies of a similar protein in mouse have assigned a variety of additional functions including nitrosylation of nuclear proteins, the regulation of mRNA stability, and acting as a transferrin receptor on the cell surface of macrophage. Many pseudogenes similar to this locus are present in the human genome. Alternative splicing results in multiple transcript variants.

## Recommended Dilutions

**WB** 1:10000 - 1:760000**IHC-P** 1:100 - 1:500**IF/ICC** 1:50 - 1:200

## Immunogen Information

**Gene ID**

2597

**Swiss Prot**

P04406

**Immunogen**

Recombinant fusion protein containing a sequence corresponding to amino acids 1-335 of human GAPDH (P04406).

**Synonyms**

G3PD; GAPD; HEL-S-162eP; GAPDH

## Contact

 | 400-999-6126 | [cn.market@abclonal.com.cn](mailto:cn.market@abclonal.com.cn) | [www.abclonal.com.cn](http://www.abclonal.com.cn)

## Product Information

**Source**

Mouse

**Isotype**

IgG2b, Kappa

**Purification**

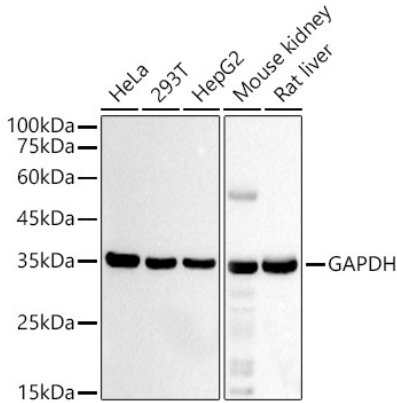
Affinity purification

**Storage**

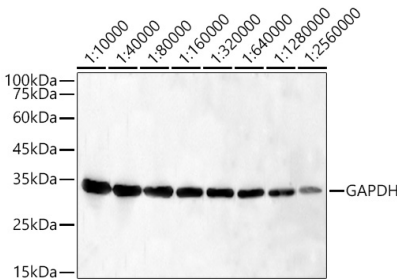
Store at -20°C. Avoid freeze / thaw cycles.

Buffer: PBS with 0.05% proclin300, 50% glycerol, pH7.3.

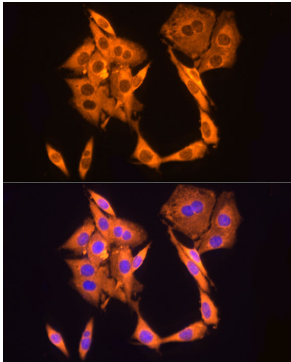
Validation Data



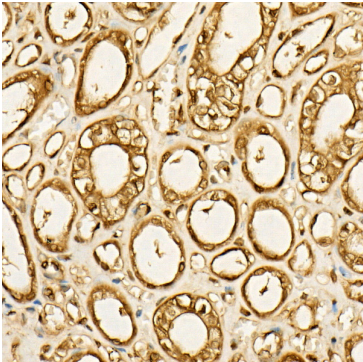
Western blot analysis of various lysates, using GAPDH Mouse mAb (High Dilution) (AC033) at 1:640000 dilution.  
Secondary antibody: HRP Goat Anti-Mouse IgG (H+L) (AS003) at 1:10000 dilution.  
Lysates/proteins: 25µg per lane.  
Blocking buffer: 3% nonfat dry milk in TBST.  
Detection: ECL Basic Kit (RM00020).  
Exposure time: 30s.



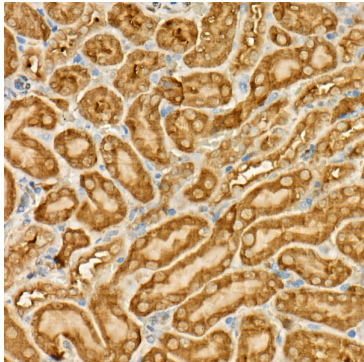
Western blot analysis of lysates from HeLa cells, using GAPDH Mouse mAb (High Dilution) (AC033) at 1:10000-1:2560000 different dilution.  
Secondary antibody: HRP Goat Anti-Mouse IgG (H+L) (AS003) at 1:10000 dilution.  
Lysates/proteins: 25µg per lane.  
Blocking buffer: 3% nonfat dry milk in TBST.  
Detection: ECL Basic Kit (RM00020).  
Exposure time: 20s.



Immunofluorescence analysis of PC-12 cells using GAPDH Mouse mAb (High Dilution) (AC033) at dilution of 1:100 (40x lens). Blue: DAPI for nuclear staining.



Immunohistochemistry analysis of GAPDH (High Dilution) in paraffin-embedded human kidney using GAPDH Mouse mAb (High Dilution) (AC033) at dilution of 1:500 (40x lens).Perform high pressure antigen retrieval with 10 mM citrate buffer pH 6.0 before commencing with IHC staining protocol.



Immunohistochemistry analysis of GAPDH (High Dilution) in paraffin-embedded mouse kidney using GAPDH Mouse mAb (High Dilution) (AC033) at dilution of 1:500 (40x lens).Perform high pressure antigen retrieval with 10 mM citrate buffer pH 6.0 before commencing with IHC staining protocol.