

# HRP-conjugated $\beta$ -Actin Mouse mAb

Catalog No.: AC043

1 Publications

## Basic Information

### Observed MW

42kDa

### Calculated MW

42kDa

### Category

Loading control antibody

### Applications

ELISA, WB

### Cross-Reactivity

Human, Mouse, Rat

### CloneNo number

AMC0001

### Conjugate

HRP

## Recommended Dilutions

WB 1:2000 - 1:50000

## Background

This gene encodes one of six different actin proteins. Actins are highly conserved proteins that are involved in cell motility, structure, integrity, and intercellular signaling. The encoded protein is a major constituent of the contractile apparatus and one of the two nonmuscle cytoskeletal actins that are ubiquitously expressed. Mutations in this gene cause Baraitser-Winter syndrome 1, which is characterized by intellectual disability with a distinctive facial appearance in human patients. Numerous pseudogenes of this gene have been identified throughout the human genome.

## Immunogen Information

### Gene ID

60

### Swiss Prot

P60709

### Immunogen

Recombinant protein of Mouse HRP-conjugated  $\beta$ -Actin

### Synonyms

BRWS1; PS1TP5BP1; HRP-conjugated  $\beta$ -Actin

## Contact

☎ | 400-999-6126

✉ | [cn.market@abclonal.com.cn](mailto:cn.market@abclonal.com.cn)

🌐 | [www.abclonal.com.cn](http://www.abclonal.com.cn)

## Product Information

### Source

Mouse

### Isotype

IgG1, Lambda

### Purification

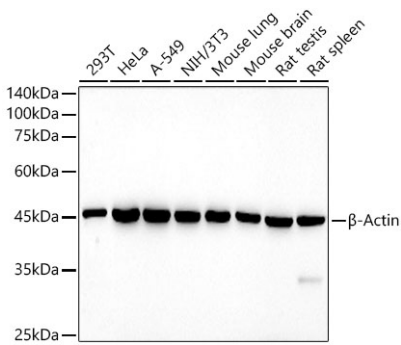
Affinity purification

### Storage

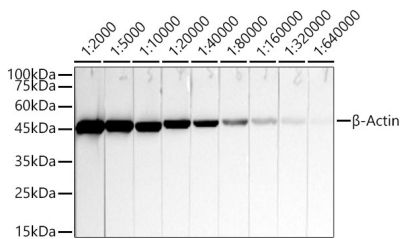
Store at -20°C. Avoid freeze / thaw cycles.

Buffer: PBS with 0.01% thimerosal, 50% glycerol, pH7.3.

Validation Data



Western blot analysis of various lysates using HRP-conjugated  $\beta$ -Actin Mouse mAb (AC043) at 1:5000 dilution.  
Lysates/proteins: 25 $\mu$ g per lane.  
Blocking buffer: 3% nonfat dry milk in TBST.  
Detection: ECL Basic Kit (RM00020).  
Exposure time: 180s.



Western blot analysis of lysates from HeLa, using HRP-conjugated  $\beta$ -Actin Rabbit mAb (AC043) at 1:2000-1:640000 dilution.  
Lysates/proteins: 25 $\mu$ g per lane.  
Blocking buffer: 3% nonfat dry milk in TBST.  
Detection: ECL Basic Kit (RM00020).  
Exposure time: 10s.