

# Phospho-ErbB4/HER4-Y1284 Rabbit pAb

Catalog No.: AP0034

1 Publications

## Basic Information

**Observed MW**

180kDa

**Calculated MW**

147kDa

**Category**

Primary antibody

**Applications**

ELISA, WB

**Cross-Reactivity**

Human, Mouse, Rat

## Background

This gene is a member of the Tyr protein kinase family and the epidermal growth factor receptor subfamily. It encodes a single-pass type I membrane protein with multiple cysteine rich domains, a transmembrane domain, a tyrosine kinase domain, a phosphatidylinositol-3 kinase binding site and a PDZ domain binding motif. The protein binds to and is activated by neuregulins and other factors and induces a variety of cellular responses including mitogenesis and differentiation. Multiple proteolytic events allow for the release of a cytoplasmic fragment and an extracellular fragment. Mutations in this gene have been associated with cancer. Alternatively spliced variants which encode different protein isoforms have been described; however, not all variants have been fully characterized.

## Recommended Dilutions

WB 1:500 - 1:1000

## Immunogen Information

**Gene ID**

2066

**Swiss Prot**

Q15303

**Immunogen**

A synthetic phosphorylated peptide around Y1284 of human ErbB4/HER4 (NP\_005226.1).

**Synonyms**

HER4; ALS19; p180erbB4; Phospho-ErbB4/HER4-Y1284

## Contact

 | 400-999-6126 | [cn.market@abclonal.com.cn](mailto:cn.market@abclonal.com.cn) | [www.abclonal.com.cn](http://www.abclonal.com.cn)

## Product Information

**Source**

Rabbit

**Isotype**

IgG

**Purification**

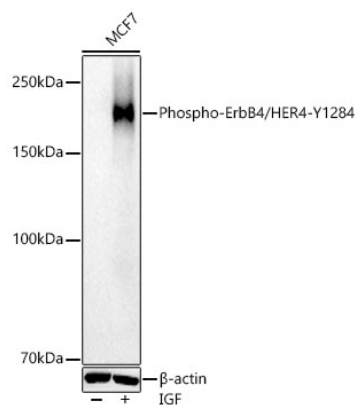
Affinity purification

**Storage**

Store at -20°C. Avoid freeze / thaw cycles.

Buffer: PBS with 0.02% sodium azide, 50% glycerol, pH 7.3.

## Validation Data



Western blot analysis of lysates from MCF7 cells using Phospho-ErbB4/HER4-Y1284 Rabbit pAb (AP0034) at 1:700 dilution. MCF7 cells were treated by IGF (200 ng/ml) at 37°C for 30 minutes after serum-starvation overnight.

Secondary antibody: HRP Goat Anti-Rabbit IgG (H+L) (AS014) at 1:10000 dilution.

Lysates/proteins: 20 µg per lane.

Blocking buffer: 3% nonfat dry milk in TBST.

Detection: ECL Basic Kit (RM00020).

Exposure time: 30s.