

# Phospho-PKCalpha/beta II-T638/641 Rabbit pAb

**Catalog No.: AP0191**

## Basic Information

**Observed MW**

80kDa

**Calculated MW**

76kDa/77kDa

**Category**

Primary antibody

**Applications**

ELISA, WB, IHC-P, IF/ICC

**Cross-Reactivity**

Human, Mouse, Rat

## Background

Protein kinase C (PKC) is a family of serine- and threonine-specific protein kinases that can be activated by calcium and second messenger diacylglycerol. PKC family members phosphorylate a wide variety of protein targets and are known to be involved in diverse cellular signaling pathways. PKC family members also serve as major receptors for phorbol esters, a class of tumor promoters. Each member of the PKC family has a specific expression profile and is believed to play a distinct role in cells. The protein encoded by this gene is one of the PKC family members. This protein kinase has been reported to be involved in many different cellular functions, such as B cell activation, apoptosis induction, endothelial cell proliferation, and intestinal sugar absorption. Studies in mice also suggest that this kinase may also regulate neuronal functions and correlate fear-induced conflict behavior after stress. Alternatively spliced transcript variants encoding distinct isoforms have been reported.

## Recommended Dilutions

<b>WB</b>	1:500 - 1:2000
<b>IHC-P</b>	1:50 - 1:100
<b>IF/ICC</b>	1:100 - 1:200

## Immunogen Information

**Gene ID**

5578/5579

**Swiss Prot**

P17252/P05771

**Immunogen**

A synthetic phosphorylated peptide around T638 of human PKCalpha/beta IIPRKCA (NP\_002728.2).

**Synonyms**

PKC-beta; PKCB; PRKCB1; PRKCB2; Phospho-PKCalpha/beta II-T638/641

## Contact

	400-999-6126
	<a href="mailto:cn.market@abclonal.com.cn">cn.market@abclonal.com.cn</a>
	<a href="http://www.abclonal.com.cn">www.abclonal.com.cn</a>

## Product Information

**Source**

Rabbit

**Isotype**

IgG

**Purification**

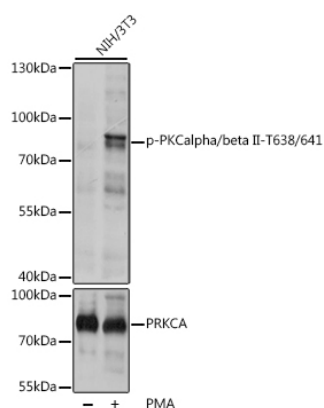
Affinity purification

**Storage**

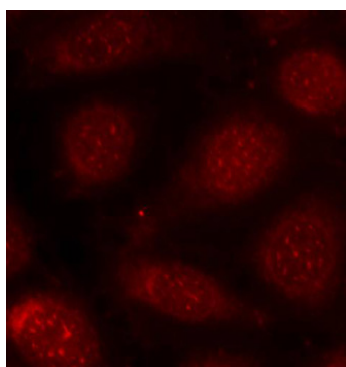
Store at -20°C. Avoid freeze / thaw cycles.

Buffer: PBS with 0.02% sodium azide, 50% glycerol, pH 7.3.

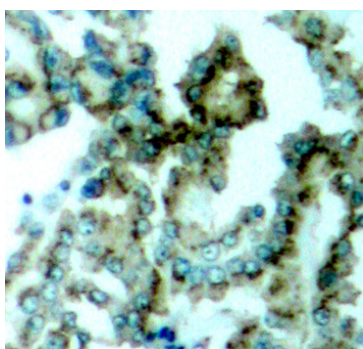
## Validation Data



Western blot analysis of lysates from NIH/3T3 cells, using Phospho-PKCalpha/beta II-T638/641 pAb (AP0191) at 1:1000 dilution or PRKCA antibody (A13342). NIH/3T3 cells were treated by PMA/TPA (200nM) for 30 minutes after serum-starvation overnight.  
Secondary antibody: HRP Goat Anti-Rabbit IgG (H+L) (AS014) at 1:10000 dilution.  
Lysates/proteins: 25µg per lane.  
Blocking buffer: 3% BSA.  
Detection: ECL Basic Kit (RM00020).  
Exposure time: 1s.



Immunofluorescence analysis of methanol-fixed MCF-7 cells using Phospho-PKCalpha/beta II-T638/641 Rabbit pAb (AP0191).



Immunohistochemistry analysis of paraffin-embedded Human lung carcinoma tissue, using Phospho-PKCalpha/beta II-T638/641 Rabbit pAb (AP0191). Perform microwave antigen retrieval with 10 mM Tris/EDTA buffer pH 9.0 before commencing with IHC staining protocol.