

# Phospho-ERK1-T202 + ERK2-T185 Rabbit pAb

Catalog No.: AP0234

4 Publications

## Basic Information

**Observed MW**

42kDa/44kDa

**Calculated MW**

38kDa/40kDa/43kDa

**Category**

Primary antibody

**Applications**

ELISA, WB, IHC-P, IF/ICC

**Cross-Reactivity**

Human, Mouse, Rat

## Background

The protein encoded by this gene is a member of the MAP kinase family. MAP kinases, also known as extracellular signal-regulated kinases (ERKs), act in a signaling cascade that regulates various cellular processes such as proliferation, differentiation, and cell cycle progression in response to a variety of extracellular signals. This kinase is activated by upstream kinases, resulting in its translocation to the nucleus where it phosphorylates nuclear targets. Alternatively spliced transcript variants encoding different protein isoforms have been described.

## Recommended Dilutions

<b>WB</b>	1:500 - 1:1000
<b>IHC-P</b>	1:50 - 1:100
<b>IF/ICC</b>	1:20 - 1:100

## Immunogen Information

**Gene ID**

5594/5595

**Swiss Prot**

P28482/P27361

**Immunogen**

A synthetic phosphorylated peptide around T202 of human ERK1/ERK2 (NP\_002737.2).

**Synonyms**

## Contact

	400-999-6126
	<a href="mailto:cn.market@abclonal.com.cn">cn.market@abclonal.com.cn</a>
	<a href="http://www.abclonal.com.cn">www.abclonal.com.cn</a>

## Product Information

**Source**

Rabbit

**Isotype**

IgG

**Purification**

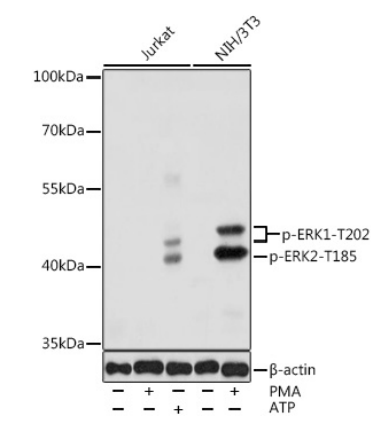
Affinity purification

**Storage**

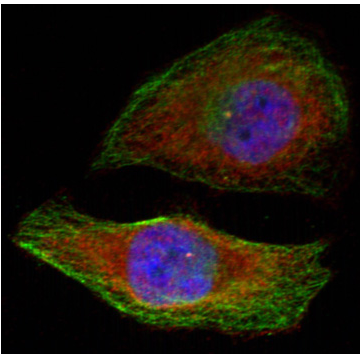
Store at -20°C. Avoid freeze / thaw cycles.

Buffer: PBS with 0.02% sodium azide, 50% glycerol, pH 7.3.

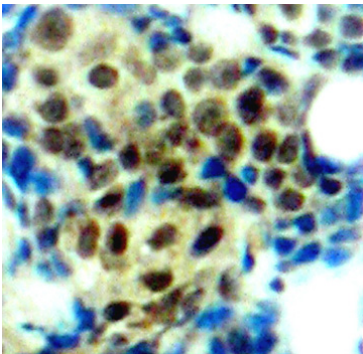
Validation Data



Western blot analysis of various lysates using Phospho-ERK1-T202 + ERK2-T185 Rabbit pAb (AP0234) at 1:1000 dilution. Jurkat and NIH/3T3 cells were treated by PMA/TPA (200 nM) at 37°C for 30 minutes after serum-starvation overnight. Jurkat cells were treated by ATP (5 mM) at 30°C for 1 hour. Secondary antibody: HRP Goat Anti-Rabbit IgG (H+L) (AS014) at 1:10000 dilution. Lysates/proteins: 25µg per lane. Blocking buffer: 3% nonfat dry milk in TBST. Detection: ECL Basic Kit (RM00020). Exposure time: 1s.



Immunofluorescence analysis of methanol-fixed HeLa cells showing cytoplasmic, nuclear staining using Phospho-ERK1-T202 + ERK2-T185 Rabbit pAb (AP0234).



Immunohistochemistry analysis of paraffin-embedded Human breast carcinoma tissue, using Phospho-ERK1-T202 + ERK2-T185 Rabbit pAb (AP0234). Perform microwave antigen retrieval with 10 mM Tris/EDTA buffer pH 9.0 before commencing with IHC staining protocol.