

Phospho-Camk2a-T286 Rabbit pAb

Catalog No.: AP0255

8 Publications

Basic Information

Observed MW

50kDa

Calculated MW

54kDa

Category

Primary antibody

Applications

ELISA, WB

Cross-Reactivity

Human, Mouse, Rat

Background

The product of this gene belongs to the serine/threonine protein kinases family, and to the Ca(2+)/calmodulin-dependent protein kinases subfamily. Calcium signaling is crucial for several aspects of plasticity at glutamatergic synapses. This calcium calmodulin-dependent protein kinase is composed of four different chains: alpha, beta, gamma, and delta. The alpha chain encoded by this gene is required for hippocampal long-term potentiation (LTP) and spatial learning. In addition to its calcium-calmodulin (CaM)-dependent activity, this protein can undergo autophosphorylation, resulting in CaM-independent activity. Several transcript variants encoding distinct isoforms have been identified for this gene.

Recommended Dilutions

WB 1:2000 - 1:4000

Immunogen Information

Gene ID

815

Swiss Prot

Q9UQM7

Immunogen

A synthetic phosphorylated peptide around T286 of human Camk2a (NP_741960.1).

Synonyms

CAMKA; MRD53; MRT63; CaMKIIalpha; CaMKIINalpha; Phospho-Camk2a-T286

Contact

☎ | 400-999-6126

✉ | cn.market@abclonal.com.cn

🌐 | www.abclonal.com.cn

Product Information

Source

Rabbit

Isotype

IgG

Purification

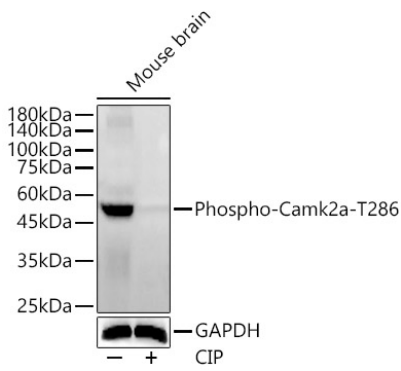
Affinity purification

Storage

Store at -20°C. Avoid freeze / thaw cycles.

Buffer: PBS with 0.05% proclin300, 50% glycerol, pH7.3.

Validation Data



Western blot analysis of Mouse brain, using Phospho-Camk2a-T286 antibody (AP0255) at 1:4000 dilution. Mouse brain cells were treated by CIP(20uL/400ul) at 37°C for 1 hour.
Secondary antibody: HRP Goat Anti-Rabbit IgG (H+L) (AS014) at 1:10000 dilution.
Lysates/proteins: 25µg per lane.
Blocking buffer: 3% nonfat dry milk in TBST.
Detection: ECL Basic Kit (RM00020).
Exposure time: 30s.