

Phospho-EGFR-Y1068 Rabbit pAb

Catalog No.: AP0301 **9 Publications**

Basic Information

Observed MW

185kDa

Calculated MW

134kDa

Category

Primary antibody

Applications

ELISA, WB, IP

Cross-Reactivity

Human, Mouse

Background

The protein encoded by this gene is a transmembrane glycoprotein that is a member of the protein kinase superfamily. This protein is a receptor for members of the epidermal growth factor family. EGFR is a cell surface protein that binds to epidermal growth factor, thus inducing receptor dimerization and tyrosine autophosphorylation leading to cell proliferation. Mutations in this gene are associated with lung cancer. EGFR is a component of the cytokine storm which contributes to a severe form of Coronavirus Disease 2019 (COVID-19) resulting from infection with severe acute respiratory syndrome coronavirus-2 (SARS-CoV-2).

Recommended Dilutions

WB 1:1000 - 1:2000

IP 0.5µg-4µg antibody for
200µg-400µg extracts of
whole cells

Immunogen Information

Gene ID

1956

Swiss Prot

P00533

Immunogen

A synthetic phosphorylated peptide around Y1068 of human EGFR (NP_005219.2).

Synonyms

ERBB; ERRP; HER1; mENA; ERBB1; PIG61; NISBD2; Phospho-EGFR-Y1068

Contact

☎ | 400-999-6126

✉ | cn.market@abclonal.com.cn

🌐 | www.abclonal.com.cn

Product Information

Source

Rabbit

Isotype

IgG

Purification

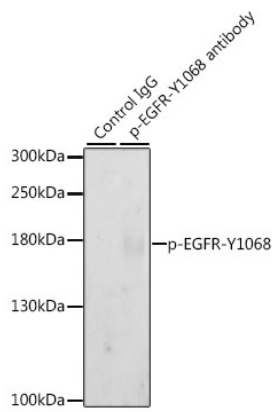
Affinity purification

Storage

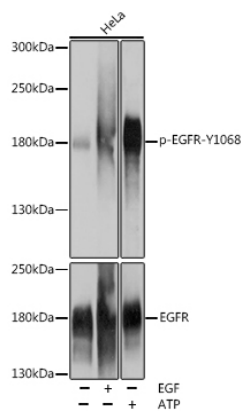
Store at -20°C. Avoid freeze / thaw cycles.

Buffer: PBS with 0.02% sodium azide, 50% glycerol, pH7.3.

Validation Data



Immunoprecipitation analysis of 200 µg extracts of A-431 cells, using 3 µg Phospho-EGFR-Y1068 pAb (AP0301). Western blot was performed from the immunoprecipitate using Phospho-EGFR-Y1068 pAb (AP0301) at a dilution of 1:1000. A-431 cells were treated by EGF (100 ng/mL) at 37°C for 30 minutes after serum-starvation overnight.



Western blot analysis of lysates from HeLa cells, using Phospho-EGFR-Y1068 Rabbit pAb (A11351).HeLa cells were treated by EGF (100 ng/mL) at 37°C for 30 minutes after serum-starvation overnight.HeLa cells were treated by ATP(5 mM) at 30°C for 1 hour.
Secondary antibody: HRP Goat Anti-Rabbit IgG (H+L) (AS014) at 1:10000 dilution.
Lysates/proteins: 25µg per lane.
Blocking buffer: 3% BSA.
Detection: ECL Basic Kit (RM00020).
Exposure time: 1s.