

Phospho-CREB1-S133 Rabbit pAb

Catalog No.: AP0333

8 Publications

Basic Information

Observed MW

40kDa

Calculated MW

35kDa

Category

Primary antibody

Applications

ELISA, WB, IHC-P

Cross-Reactivity

Human, Mouse, Rat

Background

This gene encodes a transcription factor that is a member of the leucine zipper family of DNA binding proteins. This protein binds as a homodimer to the cAMP-responsive element, an octameric palindrome. The protein is phosphorylated by several protein kinases, and induces transcription of genes in response to hormonal stimulation of the cAMP pathway. Alternate splicing of this gene results in several transcript variants encoding different isoforms.

Recommended Dilutions

WB 1:500 - 1:1000

IHC-P 1:50 - 1:100

Immunogen Information

Gene ID

1385

Swiss Prot

P16220

Immunogen

A synthetic phosphorylated peptide around S133 of human CREB1 (NP_604391.1).

Synonyms

CREB; CREB-1; Phospho-CREB1-S133

Contact

☎ | 400-999-6126

✉ | cn.market@abclonal.com.cn

🌐 | www.abclonal.com.cn

Product Information

Source

Rabbit

Isotype

IgG

Purification

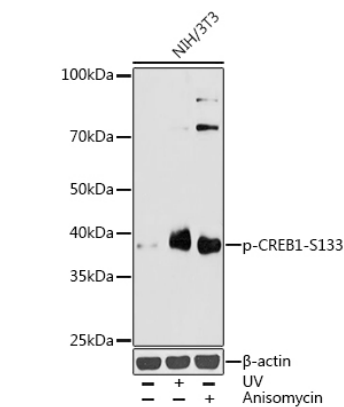
Affinity purification

Storage

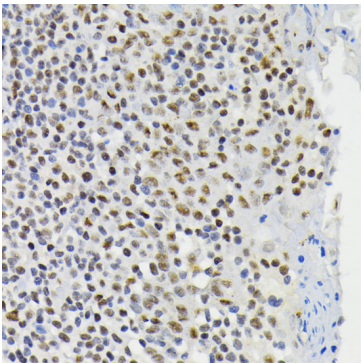
Store at -20°C. Avoid freeze / thaw cycles.

Buffer: PBS with 0.01% thimerosal, 50% glycerol, pH7.3.

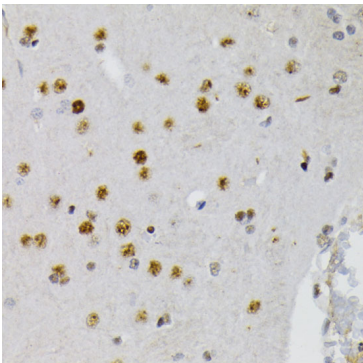
Validation Data



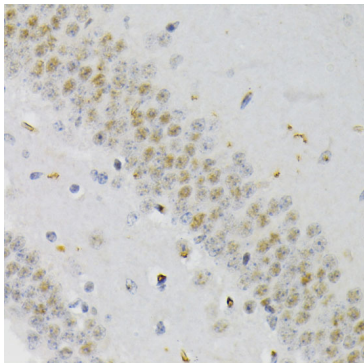
Western blot analysis of lysates from NIH/3T3 cells, using Phospho-CREB1-S133 Rabbit pAb (AP0333) at 1:1000 dilution.NIH/3T3 cells were treated by UV at room temperature for 15-30 minutes.NIH/3T3 cells were treated by Anisomycin (25 µg/mL) at 37°C for 30 minutes.
Secondary antibody: HRP Goat Anti-Rabbit IgG (H+L) (AS014) at 1:10000 dilution.
Lysates/proteins: 25µg per lane.
Blocking buffer: 3% nonfat dry milk in TBST.
Detection: ECL Basic Kit (RM00020).
Exposure time: 180s.



Immunohistochemistry analysis of Phospho-CREB1-S133 in paraffin-embedded human tonsil using Phospho-CREB1-S133 Rabbit pAb (AP0333) at dilution of 1:200 (40x lens).Perform microwave antigen retrieval with 10 mM Tris/EDTA buffer pH 9.0 before commencing with IHC staining protocol.



Immunohistochemistry analysis of Phospho-CREB1-S133 in paraffin-embedded rat brain using Phospho-CREB1-S133 Rabbit pAb (AP0333) at dilution of 1:200 (40x lens).Perform microwave antigen retrieval with 10 mM Tris/EDTA buffer pH 9.0 before commencing with IHC staining protocol.



Immunohistochemistry analysis of Phospho-CREB1-S133 in paraffin-embedded mouse brain using Phospho-CREB1-S133 Rabbit pAb (AP0333) at dilution of 1:200 (40x lens).Perform microwave antigen retrieval with 10 mM Tris/EDTA buffer pH 9.0 before commencing with IHC staining protocol.