

Phospho-IRS1-S307(Human Specific) Rabbit pAb

Catalog No.: AP0552

9 Publications

Basic Information

Observed MW

180kDa

Calculated MW

132kDa

Category

Primary antibody

Applications

ELISA, WB

Cross-Reactivity

Human, Mouse, Rat

Background

This gene encodes a protein which is phosphorylated by insulin receptor tyrosine kinase. Mutations in this gene are associated with type II diabetes and susceptibility to insulin resistance.

Recommended Dilutions

WB 1:500 - 1:1000

Immunogen Information

Gene ID

3667

Swiss Prot

P35568

Immunogen

A synthetic phosphorylated peptide around S307 of human IRS1 (NP_005535.1).

Synonyms

HIRS-1; Phospho-IRS1-S307(Human Specific)

Contact

☎ | 400-999-6126

✉ | cn.market@abclonal.com.cn

🌐 | www.abclonal.com.cn

Product Information

Source

Rabbit

Isotype

IgG

Purification

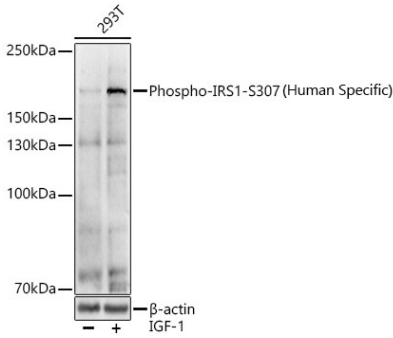
Affinity purification

Storage

Store at -20°C. Avoid freeze / thaw cycles.

Buffer: PBS with 0.05% proclin300, 50% glycerol, pH7.3.

Validation Data



Western blot analysis of various lysates using Phospho-IRS1-S307(Human Specific) Rabbit pAb (AP0552) at 1:1000 dilution.293T cells were treated by IGF-1 (50 ng/ml) at 37°C for 5 minutes after serum-starvation overnight.
Secondary antibody: HRP Goat Anti-Rabbit IgG (H+L) (AS014) at 1:10000 dilution.
Lysates/proteins: 25µg per lane.
Blocking buffer: 3% nonfat dry milk in TBST.
Detection: ECL Basic Kit (RM00020).
Exposure time: 30s.