

Phospho-STAT3-S727 Rabbit mAb

Catalog No.: AP0715 **Recombinant** **17 Publications**

Basic Information

Observed MW

88kDa

Calculated MW

88kDa

Category

Primary antibody

Applications

ELISA, WB, IHC-P

Cross-Reactivity

Human, Mouse, Rat

CloneNo number

ARC0150

Background

The protein encoded by this gene is a member of the STAT protein family. In response to cytokines and growth factors, STAT family members are phosphorylated by the receptor associated kinases, and then form homo- or heterodimers that translocate to the cell nucleus where they act as transcription activators. This protein is activated through phosphorylation in response to various cytokines and growth factors including IFNs, EGF, IL5, IL6, HGF, LIF and BMP2. This protein mediates the expression of a variety of genes in response to cell stimuli, and thus plays a key role in many cellular processes such as cell growth and apoptosis. The small GTPase Rac1 has been shown to bind and regulate the activity of this protein. PIAS3 protein is a specific inhibitor of this protein. This gene also plays a role in regulating host response to viral and bacterial infections. Mutations in this gene are associated with infantile-onset multisystem autoimmune disease and hyper-immunoglobulin E syndrome.

Recommended Dilutions

WB 1:500 - 1:2000**IHC-P** 1:50 - 1:200

Immunogen Information

Gene ID

6774

Swiss Prot

P40763

Immunogen

A synthetic phosphorylated peptide around S727 of human Phospho-Phospho-STAT3-S727 (S727) (P40763).

Synonyms

APRF; Phospho-STAT3-S727

Contact

 | 400-999-6126 | cn.market@abclonal.com.cn | www.abclonal.com.cn

Product Information

Source

Rabbit

Isotype

IgG

Purification

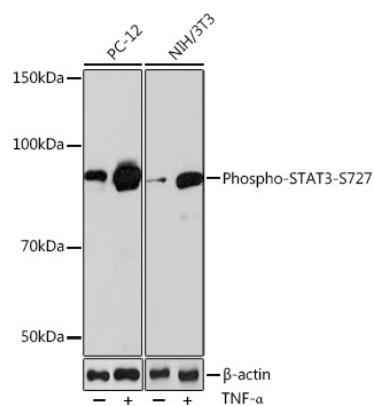
Affinity purification

Storage

Store at -20°C. Avoid freeze / thaw cycles.

Buffer: PBS with 0.02% sodium azide, 0.05% BSA, 50% glycerol, pH7.3.

Validation Data



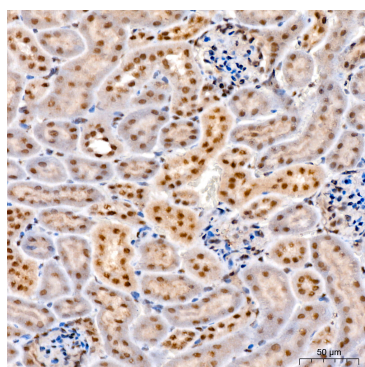
Western blot analysis of various lysates using Phospho-STAT3-S727 Rabbit mAb (AP0715) at 1:1000 dilution. NIH/3T3 and PC-12 cells were treated by TNF- α (20 ng/mL) at 37°C for 30 minutes. Secondary antibody: HRP Goat Anti-Rabbit IgG (H+L) (AS014) at 1:10000 dilution.

Lysates/proteins: 25 μ g per lane.

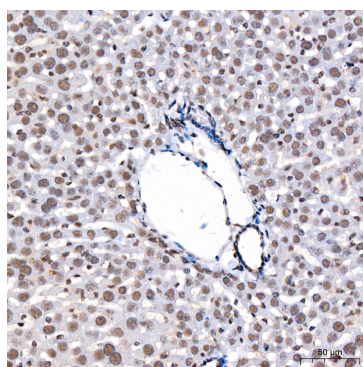
Blocking buffer: 3% nonfat dry milk in TBST.

Detection: ECL Basic Kit (RM00020).

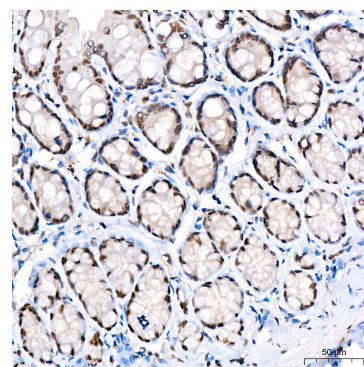
Exposure time: 120s.



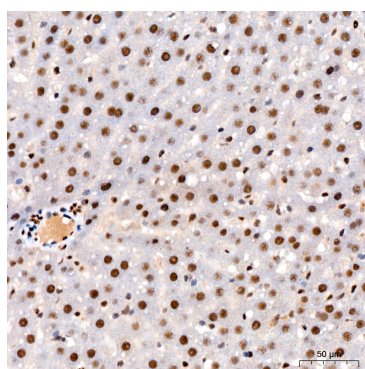
Immunohistochemistry analysis of Phospho-STAT3-S727 in paraffin-embedded mouse kidney using Phospho-STAT3-S727 Rabbit mAb (AP0715) at dilution of 1:200 (40x lens). Perform high pressure antigen retrieval with 10 mM citrate buffer pH 6.0 before commencing with IHC staining protocol.



Immunohistochemistry analysis of Phospho-STAT3-S727 in paraffin-embedded mouse liver using Phospho-STAT3-S727 Rabbit mAb (AP0715) at dilution of 1:200 (40x lens). Perform high pressure antigen retrieval with 10 mM citrate buffer pH 6.0 before commencing with IHC staining protocol.



Immunohistochemistry analysis of Phospho-STAT3-S727 in paraffin-embedded rat colon using Phospho-STAT3-S727 Rabbit mAb (AP0715) at dilution of 1:200 (40x lens). Perform high pressure antigen retrieval with 10 mM citrate buffer pH 6.0 before commencing with IHC staining protocol.



Immunohistochemistry analysis of Phospho-STAT3-S727 in paraffin-embedded rat liver using Phospho-STAT3-S727 Rabbit mAb (AP0715) at dilution of 1:200 (40x lens). Perform high pressure antigen retrieval with 10 mM citrate buffer pH 6.0 before commencing with IHC staining protocol.