

Phospho-ULK1-S757 Rabbit pAb

Catalog No.: AP0736 **9 Publications**

Basic Information

Observed MW

145kDa

Calculated MW

113kDa

Category

Primary antibody

Applications

ELISA, WB

Cross-Reactivity

Human

Background

Enables identical protein binding activity; protein serine/threonine kinase activity; and small GTPase binding activity. Involved in several processes, including autophagosome assembly; positive regulation by symbiont of host autophagy; and protein phosphorylation. Located in autophagosome; cytosol; and phagophore assembly site membrane. Is extrinsic component of autophagosome membrane; extrinsic component of omegasome membrane; and extrinsic component of phagophore assembly site membrane. Part of Atg1/ULK1 kinase complex.

Recommended Dilutions

WB 1:100 - 1:500

Immunogen Information

Gene ID

8408

Swiss Prot

O75385

Immunogen

A synthetic phosphorylated peptide around S757 of human Phospho-ULK1-S757 (NP_003556.1).

Synonyms

ATG1; ATG1A; UNC51; hATG1; Unc51.1; Phospho-ULK1-S757

Contact

☎ | 400-999-6126

✉ | cn.market@abclonal.com.cn

🌐 | www.abclonal.com.cn

Product Information

Source

Rabbit

Isotype

IgG

Purification

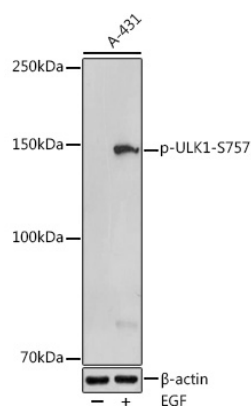
Affinity purification

Storage

Store at -20°C. Avoid freeze / thaw cycles.

Buffer: PBS with 0.01% thimerosal, 50% glycerol, pH7.3.

Validation Data



Western blot analysis of lysates from A-431 cells, using Phospho-ULK1-S757 Rabbit pAb (AP0736) at 1:500 dilution. A-431 cells were treated by EGF (100 ng/ml) at 37°C for 30 minutes after serum-starvation overnight.

Secondary antibody: HRP Goat Anti-Rabbit IgG (H+L) (AS014) at 1:10000 dilution.

Lysates/proteins: 25 µg per lane.

Blocking buffer: 3% nonfat dry milk in TBST.

Detection: ECL Basic Kit (RM00020).

Exposure time: 180s.