

Phospho-POLR2A CTD-S2 Rabbit pAb

Catalog No.: AP0749

3 Publications

Basic Information

Observed MW

260kDa

Calculated MW

217kDa

Category

Primary antibody

Applications

ELISA, WB, IP

Cross-Reactivity

Human

Background

This gene encodes the largest subunit of RNA polymerase II, the polymerase responsible for synthesizing messenger RNA in eukaryotes. The product of this gene contains a carboxy terminal domain composed of heptapeptide repeats that are essential for polymerase activity. These repeats contain serine and threonine residues that are phosphorylated in actively transcribing RNA polymerase. In addition, this subunit, in combination with several other polymerase subunits, forms the DNA binding domain of the polymerase, a groove in which the DNA template is transcribed into RNA.

Recommended Dilutions

WB 1:1000 - 1:2000

IP 0.5µg-4µg antibody for
200µg-400µg extracts of
whole cells

Immunogen Information

Gene ID

5430

Swiss Prot

P24928

Immunogen

A phospho specific peptide corresponding to residues surrounding S2 of human POLR2A CTD repeat YSPTSPS.

Synonyms

RPB1; RPO2; POLR2; POLRA; RPBh1; RPOL2; NEDHIB; RpILS; hSRPB1; hRPB220; Phospho-POLR2A CTD-S2

Contact

☎ | 400-999-6126

✉ | cn.market@abclonal.com.cn

🌐 | www.abclonal.com.cn

Product Information

Source

Rabbit

Isotype

IgG

Purification

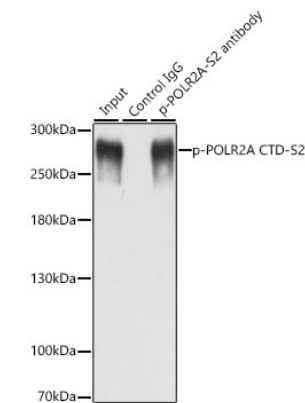
Affinity purification

Storage

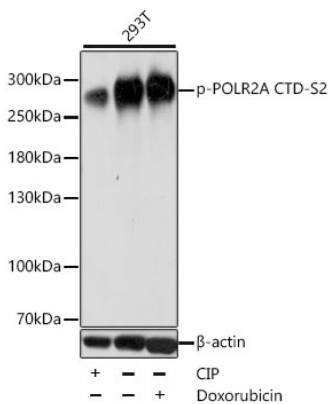
Store at -20°C. Avoid freeze / thaw cycles.

Buffer: PBS with 0.01% thimerosal, 50% glycerol, pH7.3.

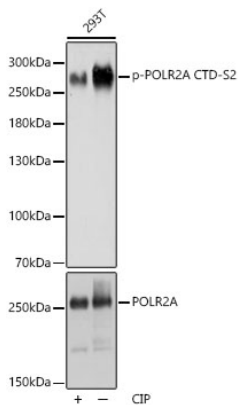
Validation Data



Immunoprecipitation analysis of 200 µg extracts of MCF-7 cells, using 3 µg Phospho-POLR2A CTD-S2 antibody (AP0749). Western blot was performed from the immunoprecipitate using Phospho-POLR2A-S2 pAb (AP0749) at a dilution of 1:1000. MCF7 cells were treated by nocodazole (50 ng/mL) at 37°C for 20 hours.



Western blot analysis of lysates from 293T cells, using Phospho-POLR2A CTD-S2 Rabbit pAb (AP0749) at 1:1000 dilution. 293T cell lysate were treated by CIP (20ul CIP for each 400ul cell lysate) at 37°C for 1 hour or treated by Doxorubicin (0.5uM) for 24 hours.
Secondary antibody: HRP Goat Anti-Rabbit IgG (H+L) (AS014) at 1:10000 dilution.
Lysates/proteins: 25µg per lane.
Blocking buffer: 3% BSA.
Detection: ECL Basic Kit (RM00020).
Exposure time: 1s.



Western blot analysis of lysates from 293T cells, using Phospho-POLR2A CTD-S2 Rabbit pAb (AP0749) at 1:1000 dilution or POLR2A antibody (A2107).293T cells were treated by CIP(20uL/400ul) at 37°C for 1 hour.
Secondary antibody: HRP Goat Anti-Rabbit IgG (H+L) (AS014) at 1:10000 dilution.
Lysates/proteins: 25µg per lane.
Blocking buffer: 3% BSA.
Detection: ECL Basic Kit (RM00020).
Exposure time: 1s.