

# Phospho- $\beta$ -Catenin-S675 Rabbit pAb

Catalog No.: AP0795

1 Publications

## Basic Information

**Observed MW**

100kDa

**Calculated MW**

85kDa

**Category**

Primary antibody

**Applications**

ELISA, WB, IF/ICC

**Cross-Reactivity**

Human, Mouse, Rat

## Background

The protein encoded by this gene is part of a complex of proteins that constitute adherens junctions (AJs). AJs are necessary for the creation and maintenance of epithelial cell layers by regulating cell growth and adhesion between cells. The encoded protein also anchors the actin cytoskeleton and may be responsible for transmitting the contact inhibition signal that causes cells to stop dividing once the epithelial sheet is complete. Finally, this protein binds to the product of the APC gene, which is mutated in adenomatous polyposis of the colon. Mutations in this gene are a cause of colorectal cancer (CRC), pilomatixoma (PTR), medulloblastoma (MDB), and ovarian cancer. Alternative splicing results in multiple transcript variants.

## Recommended Dilutions

WB 1:500 - 1:2000

IF/ICC 1:50 - 1:200

## Immunogen Information

**Gene ID**

1499

**Swiss Prot**

P35222

**Immunogen**

A synthetic phosphorylated peptide around S675 of human beta Catenin (NP\_001091679.1).

**Synonyms**EVR7; CTNNB; MRD19; NEDSDV; armadillo; Phospho- $\beta$ -Catenin-S675

## Contact

 | 400-999-6126 | [cn.market@abclonal.com.cn](mailto:cn.market@abclonal.com.cn) | [www.abclonal.com.cn](http://www.abclonal.com.cn)

## Product Information

**Source**

Rabbit

**Isotype**

IgG

**Purification**

Affinity purification

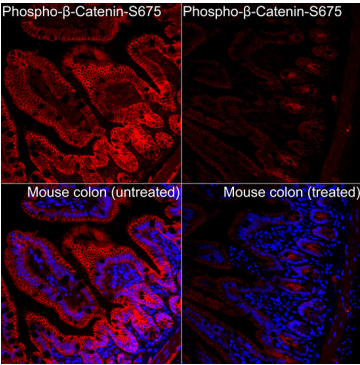
**Storage**

Store at -20°C. Avoid freeze / thaw cycles.

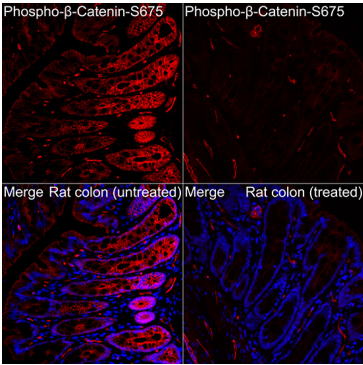
Buffer: PBS with 0.01% thimerosal, 50% glycerol, pH7.3.



Western blot analysis of lysates from C6 cells, using Phospho-β-Catenin-S675 Rabbit pAb (AP0795) at 1:1000 dilution. C6 cell lysates were treated by CIP at 37°C for 1 hour.  
Secondary antibody: HRP Goat Anti-Rabbit IgG (H+L) (AS014) at 1:10000 dilution.  
Lysates/proteins: 25µg per lane.  
Blocking buffer: 3% BSA.  
Detection: ECL Enhanced Kit (RM00021).  
Exposure time: 180s.



Immunofluorescence analysis of Mouse colon(treated with λPP) and Mouse colon(untreated) tissue using Phospho-β-Catenin-S675 Rabbit pAb (AP0795) at a dilution of 1:100 (40x lens). Secondary antibody: Cy3-conjugated Goat anti-Rabbit IgG (H+L)(AS007) at 1:500 dilution. Blue: DAPI for nuclear staining. High pressure antigen retrieval performed with 0.01M Citrate Buffer(pH 6.0) prior to IF staining.



Immunofluorescence analysis of Rat colon(treated with λPP) and Rat colon tissue using Phospho-β-Catenin-S675 Rabbit pAb (AP0795) at a dilution of 1:100 (40x lens). Secondary antibody: Cy3-conjugated Goat anti-Rabbit IgG (H+L)(AS007) at 1:500 dilution. Blue: DAPI for nuclear staining. High pressure antigen retrieval performed with 0.01M Citrate Buffer(pH 6.0) prior to IF staining.