

# Phospho-PLC gamma 2 (PLCG2)-Y1217 Rabbit pAb

Catalog No.: AP0805

## Basic Information

### Observed MW

150kDa

### Calculated MW

148kDa

### Category

Primary antibody

### Applications

ELISA, WB, IHC-P

### Cross-Reactivity

Human, Mouse

## Background

The protein encoded by this gene is a transmembrane signaling enzyme that catalyzes the conversion of 1-phosphatidyl-1D-myo-inositol 4,5-bisphosphate to 1D-myo-inositol 1,4,5-trisphosphate (IP3) and diacylglycerol (DAG) using calcium as a cofactor. IP3 and DAG are second messenger molecules important for transmitting signals from growth factor receptors and immune system receptors across the cell membrane. Mutations in this gene have been found in autoinflammation, antibody deficiency, and immune dysregulation syndrome and familial cold autoinflammatory syndrome 3.

## Recommended Dilutions

WB 1:500 - 1:2000

IHC-P 1:50 - 1:200

## Immunogen Information

### Gene ID

5336

### Swiss Prot

P16885

### Immunogen

A synthetic phosphorylated peptide around Y1217 of human PLC gamma 2 (PLCG2) (NP\_002652.2).

### Synonyms

FCAS3; APLAID; PLC-IV; PLC-gamma-2; Phospho-PLC gamma 2 (PLCG2)-Y1217

## Contact

☎ | 400-999-6126

✉ | [cn.market@abclonal.com.cn](mailto:cn.market@abclonal.com.cn)

🌐 | [www.abclonal.com.cn](http://www.abclonal.com.cn)

## Product Information

### Source

Rabbit

### Isotype

IgG

### Purification

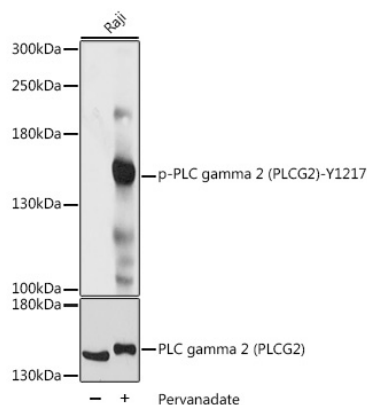
Affinity purification

### Storage

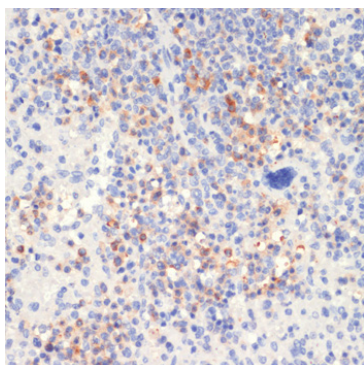
Store at -20°C. Avoid freeze / thaw cycles.

Buffer: PBS with 0.01% thimerosal, 50% glycerol, pH7.3.

## Validation Data



Western blot analysis of lysates from Raji cells, using Phospho-PLC gamma 2 (PLCG2)-Y1217 Rabbit pAb (AP0805) at 1:1000 dilution or PLC gamma 2 (PLCG2) antibody (A2182). Raji cells were treated by Pervanadate (1 mM) at 37°C for 30 minutes.  
Secondary antibody: HRP Goat Anti-Rabbit IgG (H+L) (AS014) at 1:10000 dilution.  
Lysates/proteins: 25µg per lane.  
Blocking buffer: 3% BSA.  
Detection: ECL Basic Kit (RM00020).  
Exposure time: 1s.



Immunohistochemistry analysis of paraffin-embedded mouse spleen using Phospho-PLC gamma 2 (PLCG2)-Y1217 Rabbit pAb (AP0805) at dilution of 1:100 (40x lens). Perform microwave antigen retrieval with 10 mM Tris/EDTA buffer pH 9.0 before commencing with IHC staining protocol.