

Phospho-Histone H3-S10 Rabbit pAb

Catalog No.: AP0840

6 Publications

Basic Information

Observed MW

17kDa

Calculated MW

16kDa

Category

Primary antibody

Applications

ELISA, WB, IHC-P, IF/ICC

Cross-Reactivity

Human, Mouse, Rat, Other (Wide Range Predicted)

Background

Histones are basic nuclear proteins that are responsible for the nucleosome structure of the chromosomal fiber in eukaryotes. Nucleosomes consist of approximately 146 bp of DNA wrapped around a histone octamer composed of pairs of each of the four core histones (H2A, H2B, H3, and H4). The chromatin fiber is further compacted through the interaction of a linker histone, H1, with the DNA between the nucleosomes to form higher order chromatin structures. This gene is intronless and encodes a replication-dependent histone that is a member of the histone H3 family. Transcripts from this gene lack polyA tails; instead, they contain a palindromic termination element. This gene is located separately from the other H3 genes that are in the histone gene cluster on chromosome 6p22-p21.3.

Recommended Dilutions

WB	1:500 - 1:2000
IHC-P	1:1000 - 1:5000
IF/ICC	1:50 - 1:200

Immunogen Information

Gene ID

8290/8350

Swiss Prot

Q16695/P68431

Immunogen

A synthetic phosphorylated peptide around S10 of human Histone H3 (NP_003484.1).

Synonyms

H3t; H3.4; H3/g; H3FT; H3C16; HIST3H3; Phospho-Histone H3-S10

Contact

☎	400-999-6126
✉	cn.market@abclonal.com.cn
🌐	www.abclonal.com.cn

Product Information

Source

Rabbit

Isotype

IgG

Purification

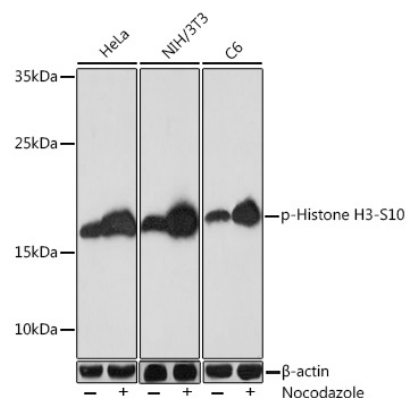
Affinity purification

Storage

Store at -20°C. Avoid freeze / thaw cycles.

Buffer: PBS with 0.01% thimerosal, 50% glycerol, pH7.3.

Validation Data



Western blot analysis of various lysates using Phospho-Histone H3-S10 Rabbit pAb (AP0840) at 1:1000 dilution. HeLa cells and NIH/3T3 cells and C6 cells were treated by Nocodazole (50 ng/ml) at 37°C for 20 hours.

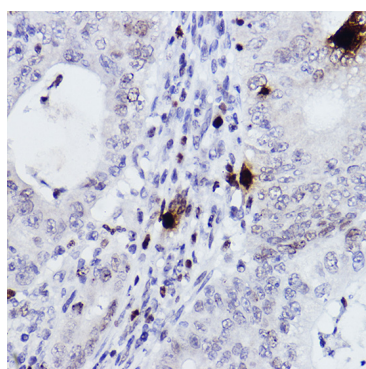
Secondary antibody: HRP Goat Anti-Rabbit IgG (H+L) (AS014) at 1:10000 dilution.

Lysates/proteins: 25µg per lane.

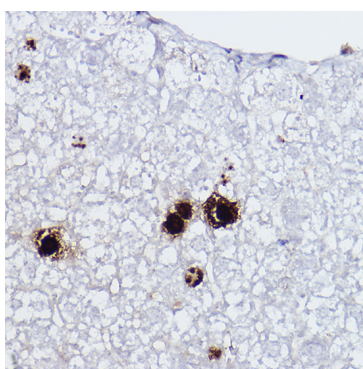
Blocking buffer: 3% BSA.

Detection: ECL Basic Kit (RM00020).

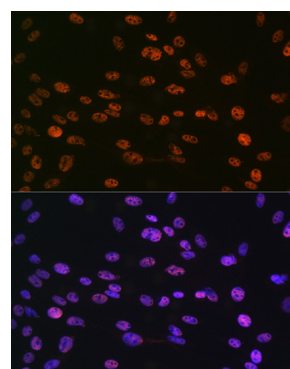
Exposure time: 1s.



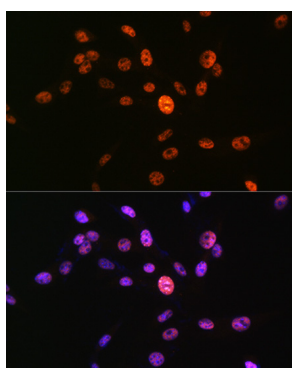
Immunohistochemistry analysis of Phospho-Histone H3-S10 in paraffin-embedded human colon carcinoma using Phospho-Histone H3-S10 Rabbit pAb (AP0840) at dilution of 1:2000 (40x lens). Perform high pressure antigen retrieval with 10 mM citrate buffer pH 6.0 before commencing with IHC staining protocol.



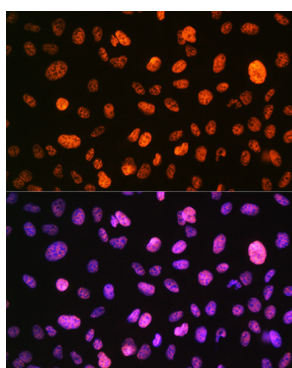
Immunohistochemistry analysis of Phospho-Histone H3-S10 in paraffin-embedded mouse liver using Phospho-Histone H3-S10 Rabbit pAb (AP0840) at dilution of 1:2000 (40x lens). Perform high pressure antigen retrieval with 10 mM citrate buffer pH 6.0 before commencing with IHC staining protocol.



Immunofluorescence analysis of C6 cells using Phospho-Histone H3-S10 Rabbit pAb (AP0840) at dilution of 1:100 (40x lens). Secondary antibody: Cy3 Goat Anti-Rabbit IgG (H+L) (AS007) at 1:500 dilution. Blue: DAPI for nuclear staining.



Immunofluorescence analysis of NIH-3T3 cells using Phospho-Histone H3-S10 Rabbit pAb (AP0840) at dilution of 1:100 (40x lens). Secondary antibody: Cy3 Goat Anti-Rabbit IgG (H+L) (AS007) at 1:500 dilution. Blue: DAPI for nuclear staining.



Immunofluorescence analysis of U-2 OS cells using Phospho-Histone H3-S10 Rabbit pAb (AP0840) at dilution of 1:100 (40x lens). Secondary antibody: Cy3 Goat Anti-Rabbit IgG (H+L) (AS007) at 1:500 dilution. Blue: DAPI for nuclear staining.