

Phospho-HSL-S563 Rabbit pAb

Catalog No.: AP0851

5 Publications

Basic Information

Observed MW

81kDa/83kDa

Calculated MW

117kDa

Category

Primary antibody

Applications

ELISA, WB

Cross-Reactivity

Human, Mouse, Rat

Background

The protein encoded by this gene has a long and a short form, generated by use of alternative translational start codons. The long form is expressed in steroidogenic tissues such as testis, where it converts cholesteryl esters to free cholesterol for steroid hormone production. The short form is expressed in adipose tissue, among others, where it hydrolyzes stored triglycerides to free fatty acids.

Recommended Dilutions

WB 1:500 - 1:1000

Immunogen Information

Gene ID

3991

Swiss Prot

Q05469

Immunogen

A synthetic phosphorylated peptide around S563 of rat HSL (XP_006228456.1).

Synonyms

HSL; LHS; REH; AOMS4; FPLD6; Phospho-HSL-S563

Contact

☎ | 400-999-6126

✉ | cn.market@abclonal.com.cn

🌐 | www.abclonal.com.cn

Product Information

Source

Rabbit

Isotype

IgG

Purification

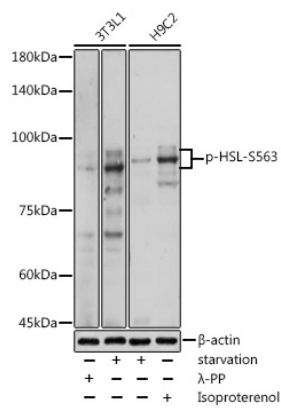
Affinity purification

Storage

Store at -20°C. Avoid freeze / thaw cycles.

Buffer: PBS with 0.01% thimerosal, 50% glycerol, pH7.3.

Validation Data



Western blot analysis of various lysates using Phospho-HSL-S563 Rabbit pAb (AP0851) at 1:1000 dilution. 3T3L1 cells were treated by λ-PP mixed solution (1ul) at 30°C for 30 minutes. H9C2 cells were treated with Isoproterenol (10 μM for 20 min) at 37°C. Secondary antibody: HRP Goat Anti-Rabbit IgG (H+L) (AS014) at 1:10000 dilution. Lysates/proteins: 25μg per lane. Blocking buffer: 3% nonfat dry milk in TBST. Detection: ECL Basic Kit (RM00020). Exposure time: 180s.