

Phospho-Cdk1/2-T14 Rabbit mAb

Catalog No.: AP1001 **Recombinant**

Basic Information

Observed MW

34kDa

Calculated MW

34kDa

Category

Primary antibody

Applications

ELISA, WB

Cross-Reactivity

Human, Mouse, Rat

CloneNo number

ARC1546

Background

The protein encoded by this gene is a member of the Ser/Thr protein kinase family. This protein is a catalytic subunit of the highly conserved protein kinase complex known as M-phase promoting factor (MPF), which is essential for G1/S and G2/M phase transitions of eukaryotic cell cycle. Mitotic cyclins stably associate with this protein and function as regulatory subunits. The kinase activity of this protein is controlled by cyclin accumulation and destruction through the cell cycle. The phosphorylation and dephosphorylation of this protein also play important regulatory roles in cell cycle control. Alternatively spliced transcript variants encoding different isoforms have been found for this gene. [provided by RefSeq, Mar 2009]

Recommended Dilutions

WB 1:500 - 1:1000

Immunogen Information

Gene ID

983/1017

Swiss Prot

P06493/P24941

Immunogen

A synthetic phosphorylated peptide around T14 of human Cdk1/2CDK1 (P06493).

Synonyms

CDC2; CDC28A; P34CDC2; Phospho-Cdk1/2-T14

Contact

☎ | 400-999-6126

✉ | cn.market@abclonal.com.cn

🌐 | www.abclonal.com.cn

Product Information

Source

Rabbit

Isotype

IgG

Purification

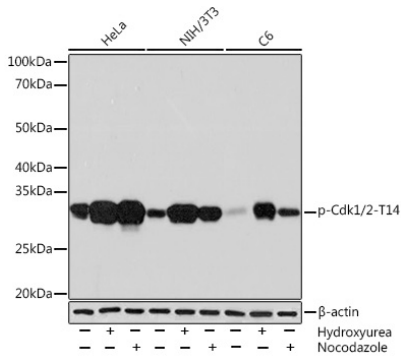
Affinity purification

Storage

Store at -20°C. Avoid freeze / thaw cycles.

Buffer: PBS with 0.02% sodium azide, 0.05% BSA, 50% glycerol, pH7.3.

Validation Data



Western blot analysis of various lysates using Phospho-Cdk1/2-T14 Rabbit mAb (AP1001) at 1:1000 dilution. HeLa cells and NIH/3T3 cells and C6 cells were treated by Hydroxyurea (4 Mm) at 37°C for 20 hours or treated by Nocodazole (100 ng/mL) at 37°C for 24 hours.
Secondary antibody: HRP-conjugated Goat anti-Rabbit IgG (H+L) (AS014) at 1:10000 dilution.
Lysates/proteins: 25µg per lane.
Blocking buffer: 3% BSA.
Detection: ECL Basic Kit (RM00020).
Exposure time: 30s.