

Phospho-ESR α -S118 Rabbit mAb

Catalog No.: AP1004 **Recombinant** **1 Publications**

Basic Information

Observed MW

66kDa

Calculated MW

66kDa

Category

Primary antibody

Applications

ELISA,WB

Cross-Reactivity

Mouse

CloneNo number

ARC1549

Background

This gene encodes an estrogen receptor and ligand-activated transcription factor. The canonical protein contains an N-terminal ligand-independent transactivation domain, a central DNA binding domain, a hinge domain, and a C-terminal ligand-dependent transactivation domain. The protein localizes to the nucleus where it may form either a homodimer or a heterodimer with estrogen receptor 2. The protein encoded by this gene regulates the transcription of many estrogen-inducible genes that play a role in growth, metabolism, sexual development, gestation, and other reproductive functions and is expressed in many non-reproductive tissues. The receptor encoded by this gene plays a key role in breast cancer, endometrial cancer, and osteoporosis. This gene is reported to have dozens of transcript variants due to the use of alternate promoters and alternative splicing, however, the full-length nature of many of these variants remain uncertain.

Recommended Dilutions

WB 1:500 - 1:1000

Immunogen Information

Gene ID

2099

Swiss Prot

P03372

Immunogen

A synthetic phosphorylated peptide around S118 of human Estrogen Receptor alpha (ESR1) (P03372).

SynonymsER; ESR; Era; ESRA; ESTRR; NR3A1; Phospho-ESR α -S118

Contact

 | 400-999-6126 | cn.market@abclonal.com.cn | www.abclonal.com.cn

Product Information

Source

Rabbit

Isotype

IgG

Purification

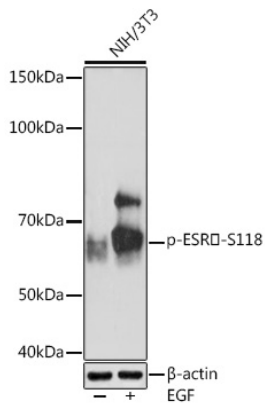
Affinity purification

Storage

Store at -20°C. Avoid freeze / thaw cycles.

Buffer: PBS with 0.02% sodium azide,0.05% BSA,50% glycerol,pH7.3.

Validation Data



Western blot analysis of lysates from NIH/3T3 cells, using Phospho-ESR α -S118 Rabbit mAb (AP1004) at 1:1000 dilution. NIH/3T3 cells were treated by EGF (100 ng/mL) at 37°C for 30 minutes after serum-starvation overnight.
Secondary antibody: HRP-conjugated Goat anti-Rabbit IgG (H+L) (AS014) at 1:10000 dilution.
Lysates/proteins: 25 μ g per lane.
Blocking buffer: 3% BSA.
Detection: ECL Enhanced Kit (RM00021).
Exposure time: 3min.