

Phospho-BTK-Y223 Rabbit mAb

Catalog No.: AP1136 **Recombinant**

Basic Information

Observed MW

77kDa

Calculated MW

76kDa

Category

Primary antibody

Applications

ELISA, WB

Cross-Reactivity

Human

CloneNo number

ARC0307

Background

The protein encoded by this gene plays a crucial role in B-cell development. Mutations in this gene cause X-linked agammaglobulinemia type 1, which is an immunodeficiency characterized by the failure to produce mature B lymphocytes, and associated with a failure of Ig heavy chain rearrangement. Alternative splicing results in multiple transcript variants encoding different isoforms.

Recommended Dilutions

WB 1:100 - 1:500

Immunogen Information

Gene ID

695

Swiss Prot

Q06187

Immunogen

A synthetic phosphorylated peptide around Y223 of human BTK (Q06187).

Synonyms

AT; ATK; BPK; XLA; IMD1; AGMX1; IGHD3; PSCTK1; Phospho-BTK-Y223

Contact

☎ | 400-999-6126

✉ | cn.market@abclonal.com.cn

🌐 | www.abclonal.com.cn

Product Information

Source

Rabbit

Isotype

IgG

Purification

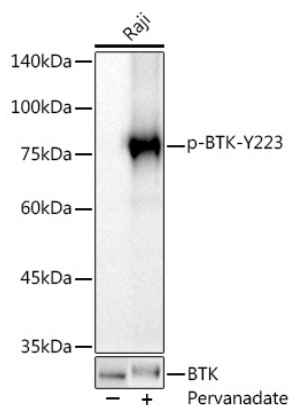
Affinity purification

Storage

Store at -20°C. Avoid freeze / thaw cycles.

Buffer: PBS with 0.02% sodium azide, 0.05% BSA, 50% glycerol, pH7.3.

Validation Data



Western blot analysis of extracts of Raji cells, using Phospho-BTK-Y223 antibody (AP1136) at 1:500 dilution. Raji cells were treated by Pervanadate (1 mM) at 37°C for 30 minutes.

Secondary antibody: HRP Goat Anti-Rabbit IgG (H+L) (AS014) at 1:10000 dilution.

Lysates/proteins: 25µg per lane.

Blocking buffer: 3% nonfat dry milk in TBST.

Detection: ECL Basic Kit (RM00020).

Exposure time: 60s.