

Phospho-TDP-43/TARDBP-S409/S410 Rabbit pAb

Catalog No.: AP1241

Basic Information

Observed MW

Refer to figures

Calculated MW

45kDa

Category

Primary antibody

Applications

ELISA,DB,WB

Cross-Reactivity

Human

Background

HIV-1, the causative agent of acquired immunodeficiency syndrome (AIDS), contains an RNA genome that produces a chromosomally integrated DNA during the replicative cycle. Activation of HIV-1 gene expression by the transactivator Tat is dependent on an RNA regulatory element (TAR) located downstream of the transcription initiation site. The protein encoded by this gene is a transcriptional repressor that binds to chromosomally integrated TAR DNA and represses HIV-1 transcription. In addition, this protein regulates alternate splicing of the CFTR gene. A similar pseudogene is present on chromosome 20.

Recommended Dilutions

DB 1:500 - 1:1000

WB 1:500 - 1:2000

Immunogen Information

Gene ID

23435

Swiss Prot

Q13148

Immunogen

A synthetic phosphorylated peptide around S409 & S410 of human TDP-43/TARDBP (NP_031401.1).

Synonyms

ALS10; TDP-43; Phospho-TDP-43/TARDBP-S409/S410

Contact

☎ | 400-999-6126

✉ | cn.market@abclonal.com.cn

🌐 | www.abclonal.com.cn

Product Information

Source

Rabbit

Isotype

IgG

Purification

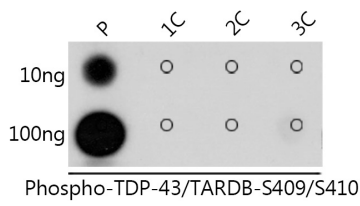
Affinity purification

Storage

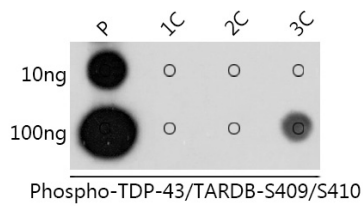
Store at -20°C. Avoid freeze / thaw cycles.

Buffer: PBS with 0.05% proclin300,50% glycerol,pH7.3.

Validation Data



Dot-blot analysis of all sorts of peptides using Phospho-TDP-43/TARDB-S409/S410 antibody (AP1241) at 1:1000 dilution. Exposure time: 1s.



Dot-blot analysis of all sorts of peptides using Phospho-TDP-43/TARDB-S409/S410 antibody (AP1241) at 1:1000 dilution. Exposure time: 10s.