

Phospho-RIP3-S227 Rabbit pAb

Catalog No.: AP1257

Basic Information

Observed MW

Refer to figures

Calculated MW

57kDa

Category

Primary antibody

Applications

ELISA, IHC-P, IF/ICC

Cross-Reactivity

Human, Mouse, Rat

Background

The product of this gene is a member of the receptor-interacting protein (RIP) family of serine/threonine protein kinases, and contains a C-terminal domain unique from other RIP family members. The encoded protein is predominantly localized to the cytoplasm, and can undergo nucleocytoplasmic shuttling dependent on novel nuclear localization and export signals. It is a component of the tumor necrosis factor (TNF) receptor-I signaling complex, and can induce apoptosis and weakly activate the NF-kappaB transcription factor.

Recommended Dilutions

IHC-P 1:50 - 1:200

IF/ICC 1:50 - 1:200

Immunogen Information

Gene ID

11035

Swiss Prot

Q9Y572

Immunogen

A synthetic phosphorylated peptide around S227 of human RIP3 (NP_006862.2).

Synonyms

RIP3; Phospho-RIP3-S227

Contact

☎ | 400-999-6126

✉ | cn.market@abclonal.com.cn

🌐 | www.abclonal.com.cn

Product Information

Source

Rabbit

Isotype

IgG

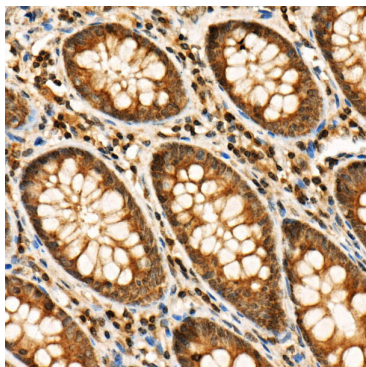
Purification

Affinity purification

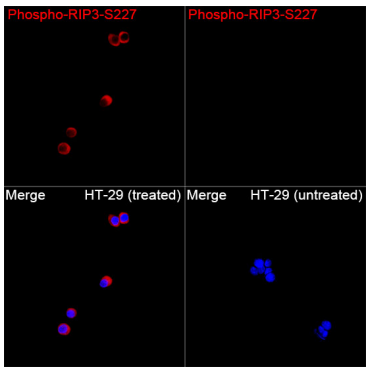
Storage

Store at -20°C. Avoid freeze / thaw cycles.

Buffer: PBS with 0.05% proclin300, 50% glycerol, pH7.3.



Immunohistochemistry analysis of paraffin-embedded Human colon using Phospho-RIP3-S227 Rabbit pAb (AP1257) at dilution of 1:20 (40x lens). Perform high pressure antigen retrieval with 10 mM citrate buffer pH 6.0 before commencing with IHC staining protocol.



Immunofluorescence analysis of HT-29 cells (treated with Z-VAD, hTNF- α and SM-164) and HT-29 cells (untreated) using Phospho-RIP3-S227 Rabbit pAb (AP1257) at a dilution of 1:100 (40x lens). Secondary antibody: Cy3-conjugated Goat anti-Rabbit IgG (H+L)(AS007) at 1:500 dilution. Blue: DAPI for nuclear staining.