

# Phospho-PLC gamma 1 (PLCG1)-Y783 Rabbit mAb

Catalog No.: AP1340 **Recombinant**

## Basic Information

**Observed MW**

155kDa

**Calculated MW**

149kDa

**Category**

Primary antibody

**Applications**

ELISA, WB

**Cross-Reactivity**

Mouse

**CloneNo number**

ARC54936

## Background

The protein encoded by this gene catalyzes the formation of inositol 1,4,5-trisphosphate and diacylglycerol from phosphatidylinositol 4,5-bisphosphate. This reaction uses calcium as a cofactor and plays an important role in the intracellular transduction of receptor-mediated tyrosine kinase activators. For example, when activated by SRC, the encoded protein causes the Ras guanine nucleotide exchange factor RasGRP1 to translocate to the Golgi, where it activates Ras. Also, this protein has been shown to be a major substrate for heparin-binding growth factor 1 (acidic fibroblast growth factor)-activated tyrosine kinase. Two transcript variants encoding different isoforms have been found for this gene.

## Recommended Dilutions

**WB** 1:1000 - 1:5000

## Immunogen Information

**Gene ID**

5335

**Swiss Prot**

P19174

**Immunogen**

A synthetic phosphorylated peptide around Y783 of human Phospho-PLC gamma 1 (PLCG1)-Y783 (NP\_877963.1).

**Synonyms**

PLC1; NCKAP3; PLC-II; PLC148; PLCgamma1; Phospho-PLC gamma 1 (PLCG1)-Y783

## Contact

 | 400-999-6126 | [cn.market@abclonal.com.cn](mailto:cn.market@abclonal.com.cn) | [www.abclonal.com.cn](http://www.abclonal.com.cn)

## Product Information

**Source**

Rabbit

**Isotype**

IgG

**Purification**

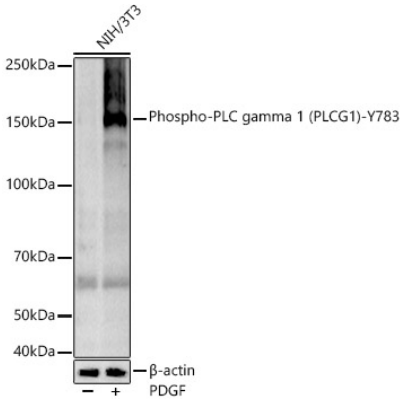
Affinity purification

**Storage**

Store at -20°C. Avoid freeze / thaw cycles.

Buffer: PBS with 0.05% proclin300, 0.05% BSA, 50% glycerol, pH7.3.

# Validation Data



Western blot analysis of various lysates, using Phospho-PLC gamma 1 (PLCG1)-Y783 antibody (AP1340) at 1:2000 dilution. NIH/3T3 cells were treated by PDGF (100 ng/ml) at 37°C for 30 minutes after serum-starvation overnight.  
Secondary antibody: HRP Goat Anti-Rabbit IgG (H+L) (AS014) at 1:10000 dilution.  
Lysates/proteins: 25µg per lane.  
Blocking buffer: 3% nonfat dry milk in TBST.  
Detection: ECL Basic Kit (RM00020).  
Exposure time: 60s.