

Phospho-FOXO1-T24 + FOXO3A-T32 + FOXO4-T28 Rabbit mAb

Catalog No.: AP1379 **Recombinant**

Basic Information

Observed MW

78-82kDa

Calculated MW

70kDa/71kDa/48kDa/54kDa

Category

Primary antibody

Applications

ELISA, WB

Cross-Reactivity

Human, Mouse

CloneNo number

ARC57268

Background

This gene belongs to the forkhead family of transcription factors which are characterized by a distinct forkhead domain. The specific function of this gene has not yet been determined; however, it may play a role in myogenic growth and differentiation. Translocation of this gene with PAX3 has been associated with alveolar rhabdomyosarcoma. [provided by RefSeq, Jul 2008]

Recommended Dilutions

WB 1:1000 - 1:5000

Immunogen Information

Gene ID

2308/2309/4303

Swiss Prot

Q12778/O43524/P98177

Immunogen

A synthetic phosphorylated peptide around T24 & T32 & T28 of human FOXO1/FOXO3A/FOXO4FOXO1.

Synonyms

FoxO1/FoxO3a/FoxO4; Phospho-FOXO1-T24 + FOXO3A-T32 + FOXO4-T28

Contact

☎ | 400-999-6126

✉ | cn.market@abclonal.com.cn

🌐 | www.abclonal.com.cn

Product Information

Source

Rabbit

Isotype

IgG

Purification

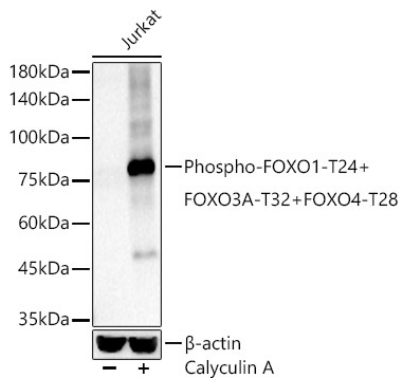
Affinity purification

Storage

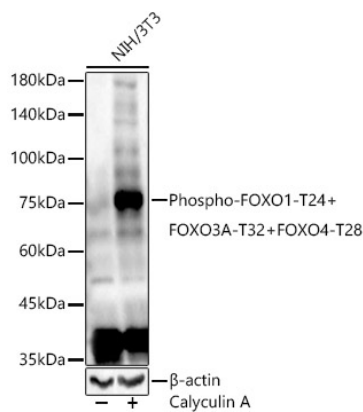
Store at -20°C. Avoid freeze / thaw cycles.

Buffer: PBS with 0.05% proclin300, 0.05% BSA, 50% glycerol, pH7.3.

Validation Data



Western blot analysis of Jurkat, using Phospho-FOXO1-T24 + FOXO3A-T32 + FOXO4-T28 antibody (AP1379) at 1:2000 dilution. Jurkat cells were treated by Calyculin A (100 nM) at 37°C for 30 minutes. Secondary antibody: HRP Goat Anti-Rabbit IgG (H+L) (AS014) at 1:10000 dilution. Lysates/proteins: 25µg per lane. Blocking buffer: 3% nonfat dry milk in TBST. Detection: ECL Basic Kit (RM00020). Exposure time: 20s.



Western blot analysis of NIH/3T3, using Phospho-FOXO1-T24 + FOXO3A-T32 + FOXO4-T28 antibody (AP1379) at 1:2000 dilution. NIH/3T3 cells were treated by Calyculin A (100 nM) at 37°C for 30 minutes after serum-starvation overnight. Secondary antibody: HRP Goat Anti-Rabbit IgG (H+L) (AS014) at 1:10000 dilution. Lysates/proteins: 25µg per lane. Blocking buffer: 3% nonfat dry milk in TBST. Detection: ECL Basic Kit (RM00020). Exposure time: 20s.