

Phospho-p70 S6 kinase-T389 Rabbit mAb

Catalog No.: AP1389

Recombinant

2 Publications

Basic Information

Observed MW

70kDa

Calculated MW

59kDa

Category

Primary antibody

Applications

ELISA, WB

Cross-Reactivity

Mouse, Rat

CloneNo number

ARC55792

Background

This gene encodes a member of the ribosomal S6 kinase family of serine/threonine kinases. The encoded protein responds to mTOR (mammalian target of rapamycin) signaling to promote protein synthesis, cell growth, and cell proliferation. Activity of this gene has been associated with human cancer. Alternatively spliced transcript variants have been observed. The use of alternative translation start sites results in isoforms with longer or shorter N-termini which may differ in their subcellular localizations. There are two pseudogenes for this gene on chromosome 17.

Recommended Dilutions

WB 1:2000 - 1:9000

Immunogen Information

Gene ID

6198

Swiss Prot

P23443

Immunogen

A synthetic phosphorylated peptide around T389 of human p70 S6 kinase(NP_003152.1).

Synonyms

S6K; PS6K; S6K1; STK14A; p70-S6K; p70 S6KA; p70-alpha; S6K-beta-1; p70(S6K)-alpha; Phospho-p70 S6 kinase-T389

Contact

☎ | 400-999-6126

✉ | cn.market@abclonal.com.cn

🌐 | www.abclonal.com.cn

Product Information

Source

Rabbit

Isotype

IgG

Purification

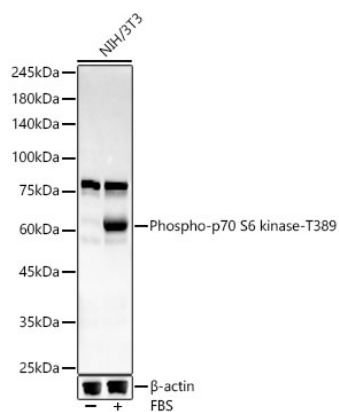
Affinity purification

Storage

Store at -20°C. Avoid freeze / thaw cycles.

Buffer: PBS with 0.05% proclin300, 0.05% BSA, 50% glycerol, pH7.3.

Validation Data



Western blot analysis of NIH/3T3, using Phospho-p70 S6 kinase-T389 antibody (AP1389) at 1:8000 dilution. NIH/3T3 cells were treated by 20% FBS at 37°C for 20 minutes after serum-starvation overnight.

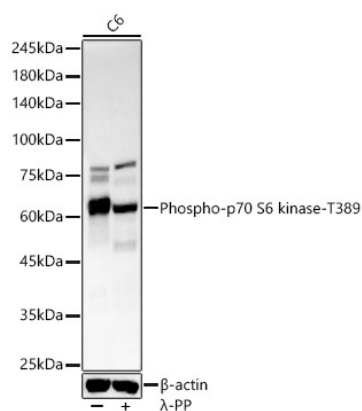
Secondary antibody: HRP Goat Anti-Rabbit IgG (H+L) (AS014) at 1:10000 dilution.

Lysates/proteins: 25µg per lane.

Blocking buffer: 3% nonfat dry milk in TBST.

Detection: ECL Basic Kit (RM00020).

Exposure time: 180s.



Western blot analysis of C6, using Phospho-p70 S6 kinase-T389 antibody (AP1389) at 1:8000 dilution. C6 cells were treated by λ-PP mixed solution (1ul) at 30°C for 30 minutes.

Secondary antibody: HRP Goat Anti-Rabbit IgG (H+L) (AS014) at 1:10000 dilution.

Lysates/proteins: 25µg per lane.

Blocking buffer: 3% nonfat dry milk in TBST.

Detection: ECL Basic Kit (RM00020).

Exposure time: 180s.