

# ABflo® 555-conjugated Goat anti-Rabbit IgG (H+L)

Catalog No.: AS058

5 Publications

## Basic Information

### Observed MW

### Calculated MW

### Category

Secondary antibody

### Applications

IF/ICC,FC

### Cross-Reactivity

Wide range of species

### Conjugate

ABflo® 555. Ex:555nm. Em:565nm.

## Background

Secondary antibodies are affinity-purified antibodies which will work with target-specific primary antibody in the detection, sorting or purification of its specified target. Secondary antibodies offer increased versatility enabling users to use many detection systems (e.g. HRP, AP, fluorescence). They can also provide greater sensitivity through signal amplification as multiple secondary antibodies. Most commonly, secondary antibodies are generated by immunizing the host animal (different from host species of primary antibody) with a pooled population of normal immunoglobulins from the host species of primary antibody and can be further purified and modified (i.e. antibody fragmentation, label conjugation, etc.) to ensure well-characterized specificity to corresponding normal immunoglobulins.

## Recommended Dilutions

IF/ICC 1:100 - 1:500

FC 1:500 - 1:2000

## Immunogen Information

### Gene ID

### Swiss Prot

### Immunogen

Rabbit IgG

### Synonyms

## Contact

 | 400-999-6126 | [cn.market@abclonal.com.cn](mailto:cn.market@abclonal.com.cn) | [www.abclonal.com.cn](http://www.abclonal.com.cn)

## Product Information

### Source

Goat

### Isotype

IgG

### Purification

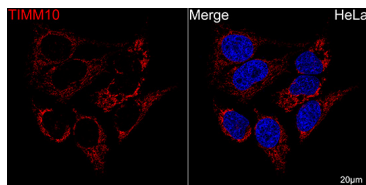
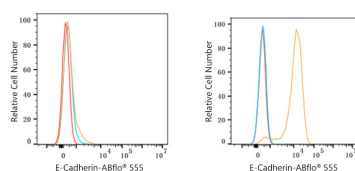
Affinity purification

### Storage

Store at -20°C. Avoid freeze / thaw cycles.

Buffer: PBS with 0.02% sodium azide, 50% glycerol, pH7.3.

## Validation Data



Flow cytometry: 1X10<sup>6</sup> K-562 cells (negative control, left) and A-431 cells (right) were surface-stained with Purified Rabbit anti-Human E-Cadherin mAb (2 µg/mL, orange line) or secondary antibody only (blue line). Non-fluorescently stained K-562 and A-431 cells were used as blank control (red line). ABflo® 555-conjugated Goat Anti-Rabbit IgG (H+L) (AS058, 1:2000) was used as a secondary antibody.

Confocal imaging of HeLa cells using [KD Validated] TIMM10 Rabbit mAb (A24996, dilution 1:200) followed by a further incubation with ABflo® 555-conjugated Goat Anti-Rabbit IgG (H+L) (AS058, dilution 1:800). DAPI was used for nuclear staining (Blue). Objective: 100x.