

# HRP-conjugated Goat anti-Rabbit IgG Heavy Chain

Catalog No.: AS063

42 Publications

## Basic Information

**Observed MW**

55kDa

**Calculated MW****Category**

Secondary antibody

**Applications**

WB

**Cross-Reactivity****Conjugate**

HRP

## Background

Secondary antibodies are affinity-purified antibodies which will work with target-specific primary antibody in the detection, sorting or purification of its specified target. Secondary antibodies offer increased versatility enabling users to use many detection systems (e.g. HRP, AP, fluorescence). They can also provide greater sensitivity through signal amplification as multiple secondary antibodies. Most commonly, secondary antibodies are generated by immunizing the host animal (different from host species of primary antibody) with a pooled population of normal immunoglobulins from the host species of primary antibody and can be further purified and modified (i.e. antibody fragmentation, label conjugation, etc.) to ensure well-characterized specificity to corresponding normal immunoglobulins.

## Recommended Dilutions

WB 1:1000-10000

## Immunogen Information

**Gene ID****Swiss Prot****Immunogen**

Rabbit IgG

**Synonyms**

## Contact

 | 400-999-6126 | [cn.market@abclonal.com.cn](mailto:cn.market@abclonal.com.cn) | [www.abclonal.com.cn](http://www.abclonal.com.cn)

## Product Information

**Source**

Goat

**Isotype**

IgG

**Purification**

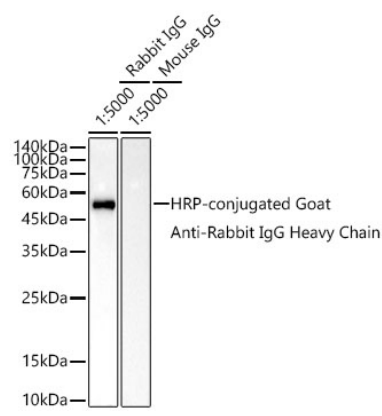
Affinity purification

**Storage**

Store at -20°C. Avoid freeze / thaw cycles.

Buffer: PBS with 50% glycerol, pH7.3.

Validation Data



Western blot analysis of lysates from Rabbit and Mouse IgG, using HRP-conjugated Goat Anti-Rabbit IgG Heavy Chain (AS063) at 1:5000 dilution.  
Lysates/proteins: 100ng per lane.  
Blocking buffer: 3% nonfat dry milk in TBST.  
Detection: ECL Basic Kit (RM00020).  
Exposure time: 180s.