

# HRP-conjugated Rabbit anti-Human IgD mAb

Catalog No.: AS095

## Basic Information

**Observed MW**

**Calculated MW**

**Category**

Secondary antibody

**Applications**

ELISA

**Cross-Reactivity**

Human

**CloneNo number**

ARC60051-HRP

**Conjugate**

HRP

## Background

## Recommended Dilutions

**ELISA** 1:5000-1:10000

## Immunogen Information

**Gene ID**

**Swiss Prot**

P01880

**Immunogen**

**Synonyms**

## Contact

 | 400-999-6126

 | [cn.market@abclonal.com.cn](mailto:cn.market@abclonal.com.cn)

 | [www.abclonal.com.cn](http://www.abclonal.com.cn)

## Product Information

**Source**

Rabbit

**Isotype**

IgG

**Purification**

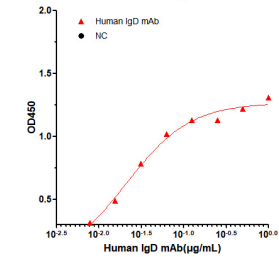
Affinity purification

**Storage**

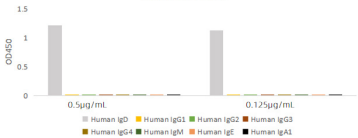
Store at -20°C. Avoid freeze / thaw cycles.

Buffer: PBS with 0.05% proclin300, 0.05% BSA, 50% glycerol, pH7.3.

Affinity of Rabbit anti-Human IgD mAb, HRP conjugated



Cross reactivity assessment of conjugated Rabbit Anti-Human IgD mAb



Dose response curve of HRP conjugated Rabbit Anti-Human IgD mAb measured by ELISA. 25 ng of Human IgD recombinant protein was coated in 384-well plate, blank wells without protein were used as negative control (NC). The coated plate was blocked and subsequently incubated with 25 µL of HRP conjugated Rabbit Anti-Human IgD mAb in a 2 fold serial dilution from 1 µg/mL to 7.8 pg/mL, incubation was performed at room temperature for 1 hour. EC50 value ( 2.10

10<sup>-2</sup> µg/mL) were calculated using 4 parameter logistic regression.