

HRP-conjugated Rabbit anti-Human IgE mAb

Catalog No.: AS105

Basic Information

Observed MW

Calculated MW

Category

Secondary antibody

Applications

ELISA

Cross-Reactivity

Human

CloneNo number

ARC60066-02-HRP

Conjugate

HRP

Background

Recommended Dilutions

ELISA 1:5000-1:10000

Immunogen Information

Gene ID

Swiss Prot

P01854

Immunogen

Synonyms

Contact

 | 400-999-6126

 | cn.market@abclonal.com.cn

 | www.abclonal.com.cn

Product Information

Source

Rabbit

Isotype

IgG

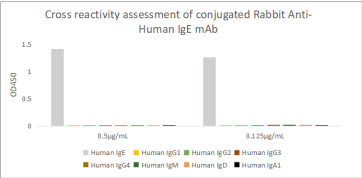
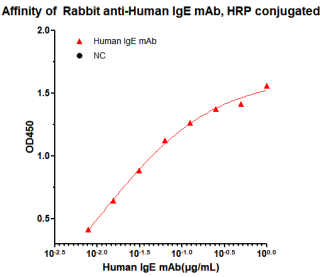
Purification

Affinity purification

Storage

Store at -20°C. Avoid freeze / thaw cycles.

Buffer: PBS with 0.05% proclin300, 0.05% BSA, 50% glycerol, pH7.3.



Dose response curve of HRP conjugated Rabbit Anti-Human IgE mAb measured by ELISA. 25 ng of Human IgE recombinant protein was coated in 384-well plate, blank wells without protein were used as negative control (NC). The coated plate was blocked and subsequently incubated with 25 µL of HRP conjugated Rabbit Anti-Human IgE mAb in a 2 fold serial dilution from 1 ng/mL to 7.8 pg/mL, incubation was performed at room temperature for 1 hour. EC50 value (1.08

10⁻² µg/mL) were calculated using 4 parameter logistic regression.