

# Rabbit anti-Mouse MCP-1 mAb (CAP)

**Catalog No.:** RM17937

## Basic Information

**Catalog No.**  
RM17937

**Category**  
Elisa Antibody Kit

**Application**  
ELISA

## Product Information

**Ig Type**  
Rabbit IgG

**Purification**  
Affinity purification


**Endotoxin Level**


**Storage**  
This antibody can be stored at 2°C-8°C for one month without detectable loss of activity. Antibody products are stable for twelve months from date of receipt when stored at -20°C to -80°C. Preservative-Free.

**Avoid repeated freeze-thaw cycles.**

**Formulation**  
Supplied as a 0.2µm filtered solution in PBS with 0.05% ProClin 300, pH 7.8.

## Contact

 | [order@abclonal.com](mailto:order@abclonal.com)

 | [support@abclonal.com](mailto:support@abclonal.com)

 | [www.abclonal.com](http://www.abclonal.com)

## Background

## Immunogen Information

**Immunogen**  
Recombinant Mouse MCP-1

## Cross-Reactivity

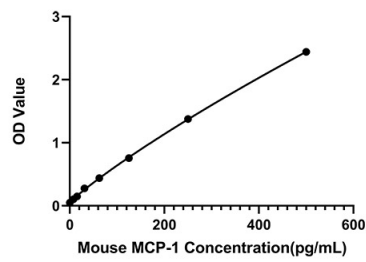
No cross-reactivity in ELISA assay with recombinant Human MCP-1

## Assay Applications

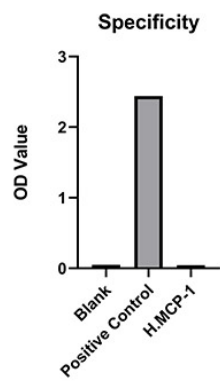
Mouse MCP-1 Sandwich ELISA Immunoassay

	Recommended Concentration	Sample
ELISA Capture	1-4µg/mL	Rabbit anti-Mouse MCP-1 (CAP)(Cat. No.RM17937)
ELISA Detection	0.25-0.0625µg/mL	Rabbit anti-Mouse MCP-1 (DET)(Cat. No.RM17938)
Standard	7.81-500pg/mL	Recombinant Mouse MCP-1 Protein

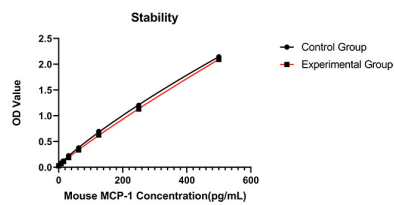
Validation Data



This standard curve is only for demonstration purposes. A standard curve should be generated for each assay.



No significant cross-reactivity or interference was observed.



Placed at 37°C for 3 days, the stability of the standard curve all conform to CV <10%.