

Recombinant Human Bcl-2 Protein

Catalog No.: RP00062 **Recombinant**

Sequence Information

Species	Gene ID	Swiss Prot
Human	596	P10415

Tags

No tag

Synonyms

BCL2; Bcl-2; PPP1R50; apoptosis regulator Bcl-2; Bcl-2; PPP1R50

Product Information

Source	Purification
<i>E. coli</i>	> 90% by SDS-PAGE.

Endotoxin

< 1.0 EU/μg of the protein by LAL method.

Formulation

Lyophilized from a 0.22 μm filtered solution of 20mM HEPES, 50mM KCl, pH 7.5. Contact us for customized product form or formulation.

Reconstitution

Centrifuge the vial before opening. Reconstitute to a concentration of 0.1-0.5 mg/mL in sterile distilled water. Avoid vortex or vigorously pipetting the protein. For long term storage, it is recommended to add a carrier protein or stabilizer (e.g. 0.1% BSA, 5% HSA, 10% FBS or 5% Trehalose), and aliquot the reconstituted protein solution to minimize freeze-thaw cycles.

Background

This protein is an integral outer mitochondrial membrane protein that blocks the apoptotic death of some cells such as lymphocytes. Constitutive expression of BCL2, such as in the case of translocation of BCL2 to Ig heavy chain locus, is thought to be the cause of follicular lymphoma.

Basic Information

Description

Recombinant Human Bcl-2 Protein is produced by *E. coli* expression system. The target protein is expressed with sequence (Ala2-Asp211) of human BCL2 (Accession #NP_000624.2) fused with no tags.

Bio-Activity

Storage

This product is stable at ≤ -70° C for up to 1 year from the date of receipt. For optimal storage, aliquot into smaller quantities after centrifugation and store at recommended temperature. Avoid repeated freeze/thaw cycles.

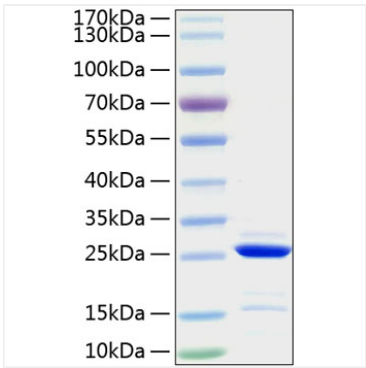
Contact

☎ | 400-999-6126

✉ | cn.market@abclonal.com.cn

🌐 | www.abclonal.com.cn

Validation Data



Recombinant Human Bcl-2 Protein was determined by SDS-PAGE with Coomassie Blue, showing a band at 25 kDa.