

Recombinant Human GDNFR-alpha-1/GFRA1 Protein

Catalog No.: RP00102

Recombinant

Sequence Information

Species	Gene ID	Swiss Prot
Human	2674	P56159

Tags

C-hFc&His

Synonyms

GFRA1;GDNFR;GDNFRA;GFR-
ALPHA-1;RET1L;RET1L;TRNR1

Product Information

Source	Purification
HEK293 cells	> 80% by SDS- PAGE.

Endotoxin

< 1.0 EU/μg of the protein by LAL
method.

Formulation

Lyophilized from a 0.22 μm filtered
solution of PBS, pH 7.4. Contact us for
customized product form or formulation.

Reconstitution

Centrifuge the vial before opening.
Reconstitute to a concentration of
0.1-0.5 mg/mL in sterile distilled water.
Avoid vortex or vigorously pipetting the
protein. For long term storage, it is
recommended to add a carrier protein or
stabilizer (e.g. 0.1% BSA, 5% HSA, 10%
FBS or 5% Trehalose), and aliquot the
reconstituted protein solution to
minimize free-thaw cycles.

Background

This protein is a member of the glial cell line-derived neurotrophic factor receptor (GDNFR) family of proteins. The encoded preproprotein is proteolytically processed to generate the mature receptor. Glial cell line-derived neurotrophic factor (GDNF) and neurturin (NTN) are two structurally related, potent neurotrophic factors that play key roles in the control of neuron survival and differentiation. This receptor is a glycosylphosphatidylinositol (GPI)-linked cell surface receptor for both GDNF and NTN, and mediates activation of the RET tyrosine kinase receptor. This gene is a candidate gene for Hirschsprung disease. Alternative splicing results in multiple transcript variants, at least one of which encodes a preproprotein that is proteolytically processed.

Basic Information

Description

Recombinant Human GDNFR-alpha-1/GFRA1 Protein is produced by HEK293 expression system. The target protein is expressed with sequence (Ala19-Lys429) of human GFRA1/GFRα1/GDNFRA (Accession #NP_665736) fused with an Fc, 6×His tag at the C-terminus.

Bio-Activity

Measured by its binding ability in a functional ELISA. Immobilized Human GDNF at 1 μg/mL (100 μL/well) can bind Human GFRA1 with a linear range of 2-332 ng/mL.

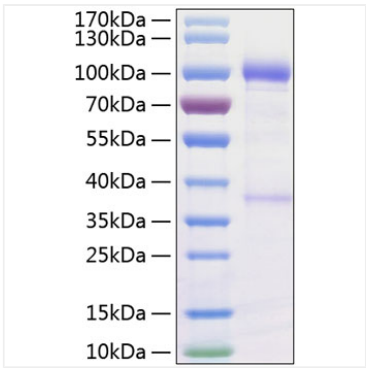
Storage

Store the lyophilized protein at -20°C to -80 °C for long term.
After reconstitution, the protein solution is stable at -20 °C for 3 months, at 2-8 °C for up to 1 week.
Avoid repeated freeze/thaw cycles.

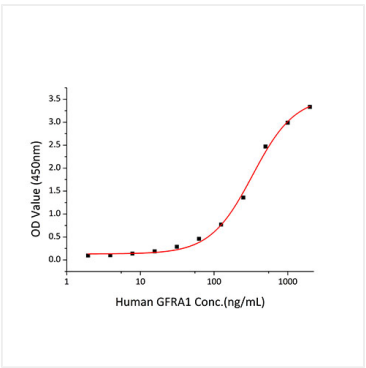
Contact

 | 400-999-6126 | cn.market@abclonal.com.cn | www.abclonal.com.cn

Validation Data



Recombinant Human GDNFR-alpha-1/GFRA1 Protein was determined by SDS-PAGE with Coomassie Blue, showing a band at 100 kDa.



Immobilized recombinant Human GDNF at 1 μ g/mL (100 μ L/well) can bind Human GFRA1 with a linear range of 2-332ng/mL.