

# Recombinant Human Beta-2-microglobulin/B2M Protein

[www.abclonal.com](http://www.abclonal.com)

Catalog No.: RP00105

Recombinant

## Sequence Information

Species	Gene ID	Swiss Prot
Human	567	P61769

### Tags

C-His

### Synonyms

B2M; IMD43; beta-2-microglobulin;IMD43

## Product Information

Source	Purification
HEK293 cells	> 97% by SDS-PAGE.

### Endotoxin

&lt; 0.1 EU/μg of the protein by LAL method.

### Formulation

Lyophilized from a 0.22 μm filtered solution of PBS, pH 7.4. Contact us for customized product form or formulation.

### Reconstitution

Centrifuge the vial before opening. Reconstitute to a concentration of 0.1-0.5 mg/mL in sterile distilled water. Avoid vortex or vigorously pipetting the protein. For long term storage, it is recommended to add a carrier protein or stabilizer (e.g. 0.1% BSA, 5% HSA, 10% FBS or 5% Trehalose), and aliquot the reconstituted protein solution to minimize free-thaw cycles.

## Background

This protein is a serum protein found in association with the major histocompatibility complex (MHC) class I heavy chain on the surface of nearly all nucleated cells. The protein has a predominantly beta-pleated sheet structure that can form amyloid fibrils in some pathological conditions. The encoded antimicrobial protein displays antibacterial activity in amniotic fluid. A mutation in this gene has been shown to result in hypercatabolic hypoproteinemia.

## Basic Information

### Description

Recombinant Human Beta-2-microglobulin/B2M Protein is produced by HEK293 expression system. The target protein is expressed with sequence (Ile21-Met119) of human B2M/Beta-2-microglobulin (Accession #NP\_004039.1) fused with a 6xHis tag at the C-terminus.

### Bio-Activity

Measured by its binding ability in a functional ELISA. Immobilized Recombinant Human B2M at 2 μg/mL (100 μL/well) can bind Recombinant Human CD8 alpha with a linear range of 31.25-341 ng/mL.

### Storage

Store the lyophilized protein at -20°C to -80 °C for long term.

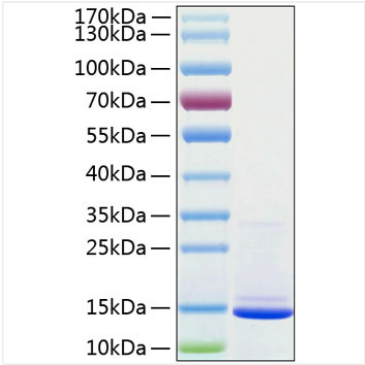
After reconstitution, the protein solution is stable at -20 °C for 3 months, at 2-8 °C for up to 1 week.

Avoid repeated freeze/thaw cycles.

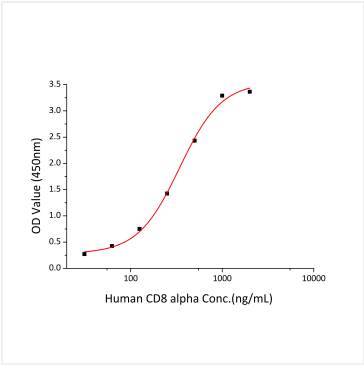
## Contact

 | 400-999-6126 | [cn.market@abclonal.com.cn](mailto:cn.market@abclonal.com.cn) | [www.abclonal.com.cn](http://www.abclonal.com.cn)

Validation Data



Recombinant Human Beta-2-microglobulin/B2M Protein was determined by SDS-PAGE with Coomassie Blue, showing a band at 13 kDa.



Immobilized Recombinant Human B2M at 2µg/mL (100µL/well) can bind Recombinant Human CD8 alpha with a linear range of 31.25-341 ng/mL.