

# Recombinant Human TET2 Protein

Catalog No.: RP01335LQ **Recombinant**

## Sequence Information

Species	Gene ID	Swiss Prot
Human	54790	Q6N021-1

### Tags

Please contact us for more information.

### Synonyms

MDS; KIAA1546;TET2;KIAA1546

## Product Information

Source	Purification
HEK293 cells	> 90% by SDS-PAGE.

### Endotoxin

Please contact us for more information.

### Formulation

Supplied as a 0.22 µm filtered solution of 50mM HEPES,300mM NaCl,1mM TCEP,10% Glycerol,pH 8.0.

### Reconstitution

## Background

## Basic Information

### Description

Recombinant Human TET2 Protein is produced by HEK293 cells expression system.


### Bio-Activity

Measured by its binding ability in a functional ELISA. Immobilized Human TET2 Protein at 1 µg/mL (100 µL/well) can bind TET2 Rabbit pAb with a linear range of 0.976-232.5 ng/mL.

### Storage

This product is stable at  $\leq -70^{\circ}\text{C}$  for up to 1 year from the date of receipt. For optimal storage, aliquot into smaller quantities after centrifugation and store at recommended temperature. Avoid repeated freeze/thaw cycles.

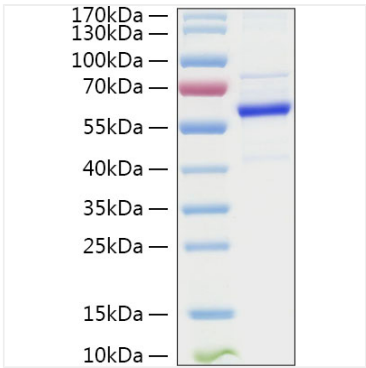
## Contact

 | 400-999-6126

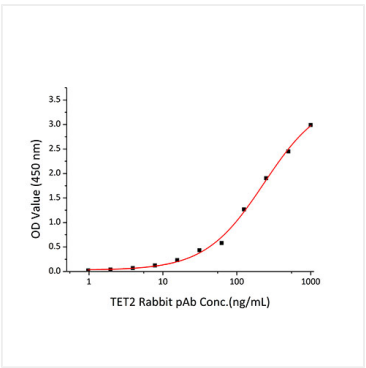
 | [cn.market@abclonal.com.cn](mailto:cn.market@abclonal.com.cn)

 | [www.abclonal.com.cn](http://www.abclonal.com.cn)

# Validation Data



Recombinant Human TET2 Protein was determined by SDS-PAGE with Coomassie Blue, showing a band at 60-65 kDa.



Immobilized Recombinant Human TET2 Protein at 1µg/mL (100 µL/well) can bind TET2 Rabbit pAb with a linear range of 0.976-232.5ng/mL.