

# Recombinant Human Ubiquitin-conjugating enzyme E2 E1/UBE2E1 protein

Catalog No.: RP10041LQ **Recombinant**

## Sequence Information

| Species | Gene ID | Swiss Prot |
|---------|---------|------------|
| Human   | 7324    | P51965     |

### Tags

His Tag

### Synonyms

UBE2E1;UBCH6

## Background

Ube2E1 is an E2 enzyme, which is part of the E1, E2, and E3 cascade responsible for ubiquitination of protein substrates. Ube2E1 was found to locate in the nucleus. It, along with Ube2D1, is known to complex with the E3 ligase Ro52 to ubiquitinate interferon regulatory transcription factors IRF3 and IRF8. Ube2E1 can also complex with a Ub ligase called RING105 to ubiquitinate a tumor suppressor known as tumor - suppressing subchromosomal transferable fragment cDNA (TSSC5).

## Basic Information

### Description

### Bio-Activity

### Storage

This product is stable at  $\leq -70^{\circ}\text{C}$  for up to 6 months from the date of receipt. For optimal storage, aliquot into smaller quantities after centrifugation and store at recommended temperature. Avoid repeated freeze/thaw cycles.

## Product Information

| Source         | Purification     |
|----------------|------------------|
| <i>E. coli</i> | ~90% by SDS-PAGE |

### Endotoxin

### Formulation

20 mM Tris, 150 mM NaCl, 2 mM  $\beta$ ME, 10% Glycerol

### Reconstitution

## Contact

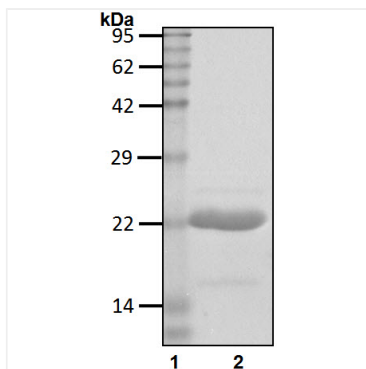
 | 400-999-6126

 | [cn.market@abclonal.com.cn](mailto:cn.market@abclonal.com.cn)

 | [www.abclonal.com.cn](http://www.abclonal.com.cn)

## Validation Data

---



Recombinant human Ubiquitin-conjugating enzyme E2 E1/UBE2E1 protein was determined by SDS-PAGE with Coomassie Blue.