

# RB Rabbit pAb

Catalog No.: A0003SP **7 Publications**

## Basic Information

### Observed MW

110 kDa

### Calculated MW

106 kDa

### Category

Primary antibody

### Applications

WB,IHC-P,ELISA

### Cross-Reactivity

Human

## Background

The protein encoded by this gene is a negative regulator of the cell cycle and was the first tumor suppressor gene found. The encoded protein also stabilizes constitutive heterochromatin to maintain the overall chromatin structure. The active, hypophosphorylated form of the protein binds transcription factor E2F1. Defects in this gene are a cause of childhood cancer retinoblastoma (RB), bladder cancer, and osteogenic sarcoma.

## Recommended Dilutions

**WB** 1:3000 - 1:20000

**IHC-P** 1:3000 - 1:12000

**ELISA** Recommended starting concentration is 1 µg/mL. Please optimize the concentration based on your specific assay requirements. For high-ratio antibody dilutions ( $\geq 1:10000$ ) a sequential dilution method is strongly recommended to ensure measurement accuracy.

## Immunogen Information

### Gene ID

5925

### Swiss Prot

P06400

### Immunogen

This information is considered to be commercially sensitive.

### Synonyms

RB; pRb; OSRC; pp110; p105-Rb; PPP1R130; p110-RB1

## Product Information

### Source

Rabbit

### Isotype

IgG

### Purification

Affinity purification

### Storage

Store at -20°C. Avoid freeze / thaw cycles.

Buffer: PBS, pH 7.3, containing 50% glycerol. Preserved with Proclin300 or sodium azide.

May contain 0.05% BSA as specified on the Certificate of Analysis.

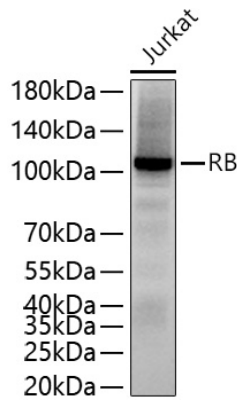
## Contact

☎ | 400-999-6126

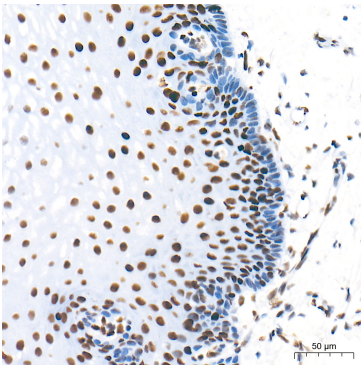
✉ | [cn.market@abclonal.com.cn](mailto:cn.market@abclonal.com.cn)

🌐 | [www.abclonal.com.cn](http://www.abclonal.com.cn)

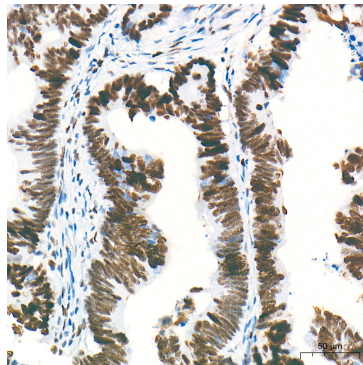
## Validation Data



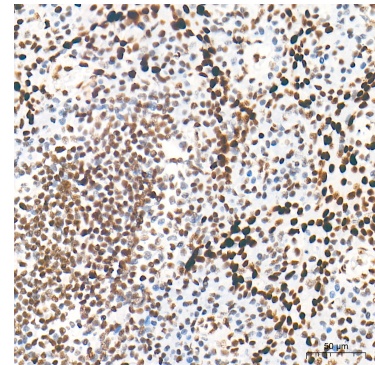
Western blot analysis of lysates from Jurkat cells using RB Rabbit pAb (A0003SP) at 1:5000 dilution incubated overnight at 4°C.  
Secondary antibody: HRP-conjugated Goat anti-Rabbit IgG (H+L) (AS014) at 1:10000 dilution.  
Lysates/proteins: 25 µg per lane.  
Blocking buffer: 3% nonfat dry milk in TBST.  
Detection: ECL Basic Kit (RM00020).  
Exposure time: 1 s.



Immunohistochemistry analysis of paraffin-embedded Human esophagus tissue using RB Rabbit pAb (A0003SP) at a dilution of 1:5000 (40x lens). High pressure antigen retrieval performed with 0.01M Tris-EDTA Buffer (pH 9.0) prior to IHC staining.



Immunohistochemistry analysis of paraffin-embedded Human colon carcinoma tissue using RB Rabbit pAb (A0003SP) at a dilution of 1:5000 (40x lens). High pressure antigen retrieval performed with 0.01M Tris-EDTA Buffer (pH 9.0) prior to IHC staining.



Immunohistochemistry analysis of paraffin-embedded Human tonsil tissue using RB Rabbit pAb (A0003SP) at a dilution of 1:5000 (40x lens). High pressure antigen retrieval performed with 0.01M Tris-EDTA Buffer (pH 9.0) prior to IHC staining.