

Cytokeratin 4 (KRT4) Rabbit mAb

Catalog No.: A0013 **Recombinant**

Basic Information

Observed MW

57kDa

Calculated MW

56kDa

Category

Primary antibody

Applications

WB,IHC-P,IF/ICC,ELISA

Cross-Reactivity

Human, Mouse, Rat

CloneNo number

ARC1804

Background

The protein encoded by this gene is a member of the keratin gene family. The type II cytokeratins consist of basic or neutral proteins which are arranged in pairs of heterotypic keratin chains coexpressed during differentiation of simple and stratified epithelial tissues. This type II cytokeratin is specifically expressed in differentiated layers of the mucosal and esophageal epithelia with family member KRT13. Mutations in these genes have been associated with White Sponge Nevus, characterized by oral, esophageal, and anal leukoplakia. The type II cytokeratins are clustered in a region of chromosome 12q12-q13.

Recommended Dilutions

WB	1:500 - 1:1000
IHC-P	1:50 - 1:200
IF/ICC	1:50 - 1:200
ELISA	Recommended starting concentration is 1 µg/mL. Please optimize the concentration based on your specific assay requirements.

Contact

	400-999-6126
	cn.market@abclonal.com.cn
	www.abclonal.com.cn

Immunogen Information

Gene ID

3851

Swiss Prot

P19013

Immunogen

A synthetic peptide corresponding to a sequence within amino acids 1-100 of human Cytokeratin 4 (KRT4) (P19013).

Synonyms

K4; CK4; CK-4; CYK4; WSN1; Cytokeratin 4 (KRT4)

Product Information

Source

Rabbit

Isotype

IgG

Purification

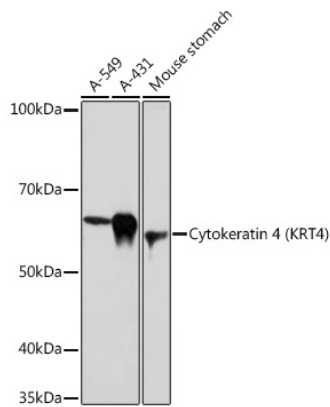
Affinity purification

Storage

Store at -20°C. Avoid freeze / thaw cycles.

Buffer: PBS with 0.02% sodium azide,0.05% BSA,50% glycerol,pH7.3.

Validation Data



Western blot analysis of various lysates using Cytokeratin 4 (KRT4) (KRT4) Rabbit mAb (A0013) at 1:1000 dilution.

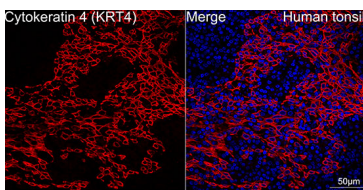
Secondary antibody: HRP-conjugated Goat anti-Rabbit IgG (H+L) (AS014) at 1:10000 dilution.

Lysates/proteins: 25µg per lane.

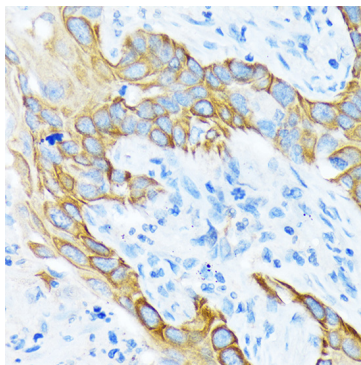
Blocking buffer: 3% nonfat dry milk in TBST.

Detection: ECL Basic Kit (RM00020).

Exposure time: 30s.



Confocal imaging of human tonsil tissue using Cytokeratin 4 (KRT4) Rabbit mAb (A0013, dilution 1:100) (Red). DAPI was used for nuclear staining (blue). Objective: 40x. Perform high pressure antigen retrieval with 10 mM citrate buffer (pH 6.0) before commencing with IF staining protocol.



Immunohistochemistry analysis of paraffin-embedded Human lung squamous carcinoma tissue using Cytokeratin 4 (KRT4) (KRT4) Rabbit mAb (A0013) at dilution of 1:100 (40x lens). Microwave antigen retrieval performed with 0.01M Tris/EDTA Buffer (pH 9.0) prior to IHC staining.