

KIFC1 Rabbit mAb

Catalog No.: A0077 **Recombinant**

Basic Information

Observed MW

74kDa

Calculated MW

74kDa

Category

Primary antibody

Applications

ELISA, WB, IHC-P, IF/ICC

Cross-Reactivity

Human, Mouse

CloneNo number

ARC1808

Background

Predicted to enable microtubule binding activity and minus-end-directed microtubule motor activity. Involved in mitotic metaphase plate congression and mitotic spindle assembly. Located in membrane.

Recommended Dilutions

WB	1:500 - 1:1000
IHC-P	1:50 - 1:200
IF/ICC	1:50 - 1:200

Immunogen Information

Gene ID

3833

Swiss Prot

Q9BW19

Immunogen

A synthetic peptide corresponding to a sequence within amino acids 1-100 of human KIFC1 (Q9BW19).

Synonyms

HSET; KNSL2; KIFC1

Contact

 | 400-999-6126

 | cn.market@abclonal.com.cn

 | www.abclonal.com.cn

Product Information

Source

Rabbit

Isotype

IgG

Purification

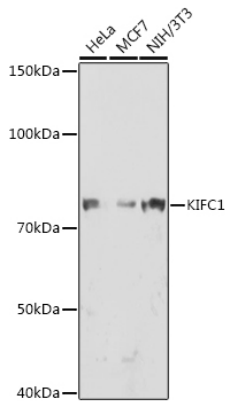
Affinity purification

Storage

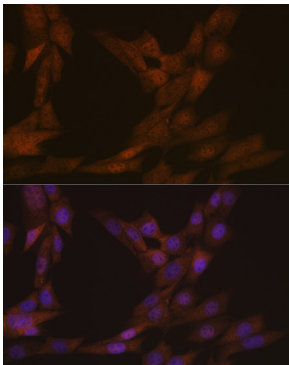
Store at -20°C. Avoid freeze / thaw cycles.

Buffer: PBS with 0.02% sodium azide, 0.05% BSA, 50% glycerol, pH7.3.

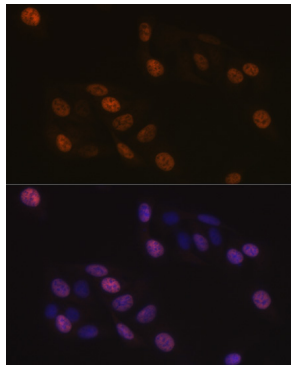
Validation Data



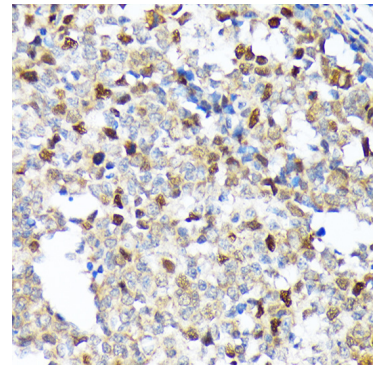
Western blot analysis of various lysates using KIFC1 Rabbit mAb (A0077) at 1:1000 dilution. Secondary antibody: HRP Goat Anti-Rabbit IgG (H+L) (AS014) at 1:10000 dilution. Lysates/proteins: 25µg per lane. Blocking buffer: 3% nonfat dry milk in TBST. Detection: ECL Enhanced Kit (RM00021). Exposure time: 90s.



Immunofluorescence analysis of NIH-3T3 cells using KIFC1 Rabbit mAb (A0077) at dilution of 1:100 (40x lens). Secondary antibody: Cy3 Goat Anti-Rabbit IgG (H+L) (AS007) at 1:500 dilution. Blue: DAPI for nuclear staining.



Immunofluorescence analysis of U-2 OS cells using KIFC1 Rabbit mAb (A0077) at dilution of 1:100 (40x lens). Secondary antibody: Cy3 Goat Anti-Rabbit IgG (H+L) (AS007) at 1:500 dilution. Blue: DAPI for nuclear staining.



Immunohistochemistry analysis of paraffin-embedded human appendix using KIFC1 Rabbit mAb (A0077) at dilution of 1:100 (40x lens). Perform microwave antigen retrieval with 10 mM Tris/EDTA buffer pH 9.0 before commencing with IHC staining protocol.