

MonoMethyl-Histone H2B-K116 Rabbit mAb

Catalog No.: A0080

Recombinant

1 Publications

Basic Information

Observed MW

Refer to figures

Calculated MW

14kDa

Category

Primary antibody

Applications

ELISA,IHC-P

Cross-Reactivity

Human, Mouse, Rat, Other (Wide Range Predicted)

CloneNo number

ARC2494

Background

Histones are basic nuclear proteins that are responsible for the nucleosome structure of the chromosomal fiber in eukaryotes. Two molecules of each of the four core histones (H2A, H2B, H3, and H4) form an octamer, around which approximately 146 bp of DNA is wrapped in repeating units, called nucleosomes. The linker histone, H1, interacts with linker DNA between nucleosomes and functions in the compaction of chromatin into higher order structures. This gene encodes a replication-dependent histone that is a member of the histone H2B family, and generates two transcripts through the use of the conserved stem-loop termination motif, and the polyA addition motif. The protein has antibacterial and antifungal antimicrobial activity.

Recommended Dilutions

IHC-P 1:50 - 1:200

Immunogen Information

Gene ID

3017/8349

Swiss Prot

P62807/Q16778

Immunogen

A synthesized peptide derived from human Histone H2B (mono methyl K116).

Synonyms

H2B; H2BE; H2BQ; GL105; H2B.1; H2BFQ; H2BGL105; H2B-GL105; HIST2H2BE; MonoMethyl-Histone H2B-K116

Contact

☎ | 400-999-6126

✉ | cn.market@abclonal.com.cn

🌐 | www.abclonal.com.cn

Product Information

Source

Rabbit

Isotype

IgG

Purification

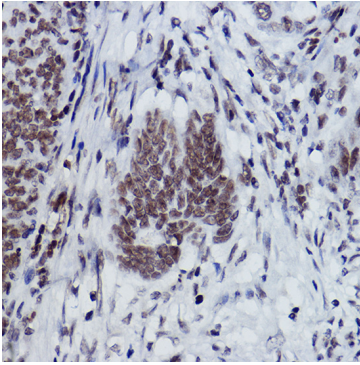
Affinity purification

Storage

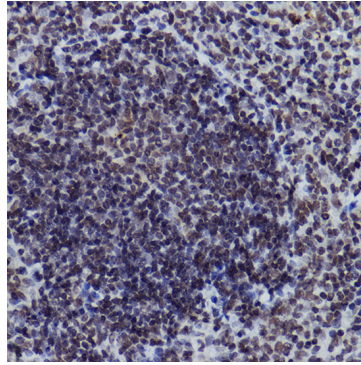
Store at -20°C. Avoid freeze / thaw cycles.

Buffer: PBS with 0.02% sodium azide,0.05% BSA,50% glycerol,pH7.3.

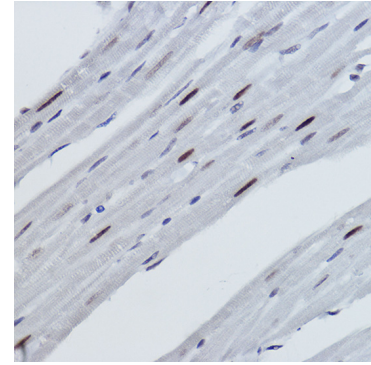
Validation Data



Immunohistochemistry analysis of paraffin-embedded human colon carcinoma using MonoMethyl-Histone H2B-K116 Rabbit mAb (A0080) at dilution of 1:100 (40x lens). Perform high pressure antigen retrieval with 10 mM citrate buffer pH 6.0 before commencing with IHC staining protocol.



Immunohistochemistry analysis of paraffin-embedded mouse spleen using MonoMethyl-Histone H2B-K116 Rabbit mAb (A0080) at dilution of 1:100 (40x lens). Perform high pressure antigen retrieval with 10 mM citrate buffer pH 6.0 before commencing with IHC staining protocol.



Immunohistochemistry analysis of paraffin-embedded rat heart using MonoMethyl-Histone H2B-K116 Rabbit mAb (A0080) at dilution of 1:100 (40x lens). Perform high pressure antigen retrieval with 10 mM citrate buffer pH 6.0 before commencing with IHC staining protocol.