

# CD10/MME Rabbit pAb

**Catalog No.: A0088**

## Basic Information

**Observed MW**

105kDa

**Calculated MW**

86kDa

**Category**

Primary antibody

**Applications**

WB

**Cross-Reactivity**

Mouse

## Background

The protein encoded by this gene is a type II transmembrane glycoprotein and a common acute lymphocytic leukemia antigen that is an important cell surface marker in the diagnosis of human acute lymphocytic leukemia (ALL). The encoded protein is present on leukemic cells of pre-B phenotype, which represent 85% of cases of ALL. This protein is not restricted to leukemic cells, however, and is found on a variety of normal tissues. The protein is a neutral endopeptidase that cleaves peptides at the amino side of hydrophobic residues and inactivates several peptide hormones including glucagon, enkephalins, substance P, neurotensin, oxytocin, and bradykinin.

## Recommended Dilutions

**WB** 1:500 - 1:2000

## Immunogen Information

**Gene ID**

4311

**Swiss Prot**

P08473

**Immunogen**

A synthetic peptide of human CD10/CD10/MME

**Synonyms**

NEP; SFE; CD10; CALLA; CMT2T; SCA43; CD10/MME

## Contact

 | 400-999-6126 | [cn.market@abclonal.com.cn](mailto:cn.market@abclonal.com.cn) | [www.abclonal.com.cn](http://www.abclonal.com.cn)

## Product Information

**Source**

Rabbit

**Isotype**

IgG

**Purification**

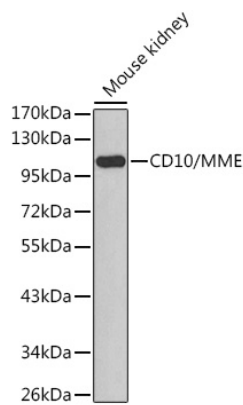
Affinity purification

**Storage**

Store at 4°C. Avoid freeze / thaw cycles.

Buffer: PBS with 0.02% sodium azide, pH7.3.

Validation Data



Western blot analysis of lysates from mouse kidney, using CD10/MME Rabbit pAb (A0088).  
Secondary antibody: HRP Goat Anti-Rabbit IgG (H+L) (AS014) at 1:10000 dilution.  
Lysates/proteins: 25µg per lane.  
Blocking buffer: 3% nonfat dry milk in TBST.