

# GluR2/GRIA2 Rabbit pAb

Catalog No.: A0111 **5 Publications**

## Basic Information

**Observed MW**

100kDa

**Calculated MW**

99kDa

**Category**

Primary antibody

**Applications**

ELISA,WB

**Cross-Reactivity**

Mouse

## Background

Glutamate receptors are the predominant excitatory neurotransmitter receptors in the mammalian brain and are activated in a variety of normal neurophysiologic processes. This gene product belongs to a family of glutamate receptors that are sensitive to alpha-amino-3-hydroxy-5-methyl-4-isoxazole propionate (AMPA), and function as ligand-activated cation channels. These channels are assembled from 4 related subunits, GRIA1-4. The subunit encoded by this gene (GRIA2) is subject to RNA editing (CAG->CGG; Q->R) within the second transmembrane domain, which is thought to render the channel impermeable to Ca(2+). Human and animal studies suggest that pre-mRNA editing is essential for brain function, and defective GRIA2 RNA editing at the Q/R site may be relevant to amyotrophic lateral sclerosis (ALS) etiology. Alternative splicing, resulting in transcript variants encoding different isoforms, (including the flip and flop isoforms that vary in their signal transduction properties), has been noted for this gene.

## Recommended Dilutions

WB 1:500 - 1:1000

## Immunogen Information

**Gene ID**

2891

**Swiss Prot**

P42262

**Immunogen**

Recombinant fusion protein containing a sequence corresponding to amino acids 25-230 of human GluR2/GluR2/GRIA2 (NP\_001077088.1).

**Synonyms**

GLUR2; GLURB; GluA2; HBGR2; NEDLIB; glur-2; glur-B; GluR-K2; GluR2/GRIA2

## Contact

 | 400-999-6126 | [cn.market@abclonal.com.cn](mailto:cn.market@abclonal.com.cn) | [www.abclonal.com.cn](http://www.abclonal.com.cn)

## Product Information

**Source**

Rabbit

**Isotype**

IgG

**Purification**

Affinity purification

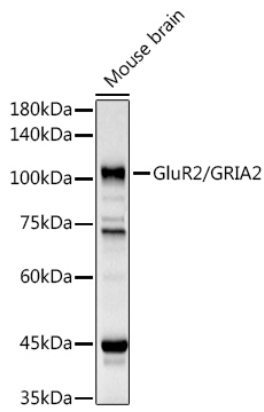
**Storage**

Store at -20°C. Avoid freeze / thaw cycles.

Buffer: PBS with 0.02% sodium azide,50% glycerol,pH7.3.

## Validation Data

---



Western blot analysis of lysates from Mouse brain, using GluR2/GRIA2 Rabbit pAb (A0111) at 1:1000 dilution.

Secondary antibody: HRP Goat Anti-Rabbit IgG (H+L) (AS014) at 1:10000 dilution.

Lysates/proteins: 25µg per lane.

Blocking buffer: 3% nonfat dry milk in TBST.

Detection: ECL Basic Kit (RM00020).

Exposure time: 30s.