

Cytokeratin 17 (KRT17) Rabbit pAb

Catalog No.: A0123

4 Publications

Basic Information

Observed MW

48kDa

Calculated MW

48kDa

Category

Primary antibody

Applications

WB, IF/ICC, ELISA

Cross-Reactivity

Human, Mouse, Rat

Background

This gene encodes the type I intermediate filament chain keratin 17, expressed in nail bed, hair follicle, sebaceous glands, and other epidermal appendages. Mutations in this gene lead to Jackson-Lawler type pachyonychia congenita and steatocystoma multiplex.

Recommended Dilutions

WB 1:500 - 1:1000

IF/ICC 1:50 - 1:200

ELISA Recommended starting concentration is 1 µg/mL. Please optimize the concentration based on your specific assay requirements.

Immunogen Information

Gene ID

3872

Swiss Prot

Q04695

Immunogen

Synthetic peptide. This information is considered to be commercially sensitive.

Synonyms

PC; K17; PC2; 39.1; CK-17; PCHC1; Cytokeratin 17 (KRT17)

Contact

☎ | 400-999-6126

✉ | cn.market@abclonal.com.cn

🌐 | www.abclonal.com.cn

Product Information

Source

Rabbit

Isotype

IgG

Purification

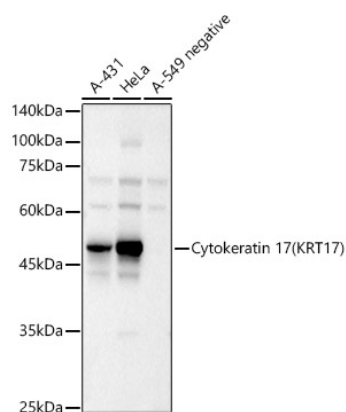
Affinity purification

Storage

Store at -20°C. Avoid freeze / thaw cycles.

Buffer: PBS containing 50% glycerol, preserved with proclin300 or sodium azide (as specified on the Certificate of Analysis), pH 7.3.

Validation Data



Western blot analysis of various lysates using Cytokeratin 17 (KRT17) Rabbit pAb (A0123) at 1:1000 dilution.

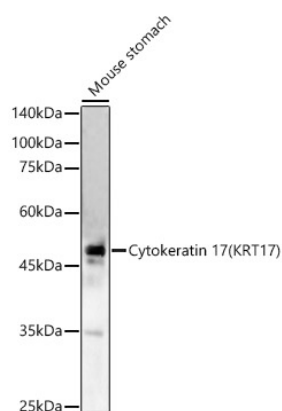
Secondary antibody: HRP-conjugated Goat anti-Rabbit IgG (H+L) (AS014) at 1:10000 dilution.

Lysates/proteins: 25µg per lane.

Blocking buffer: 3% nonfat dry milk in TBST.

Detection: ECL Basic Kit (RM00020).

Exposure time: 1s.



Western blot analysis of lysates from Mouse stomach, using Cytokeratin 17 (KRT17) Rabbit pAb (A0123) at 1:1000 dilution.

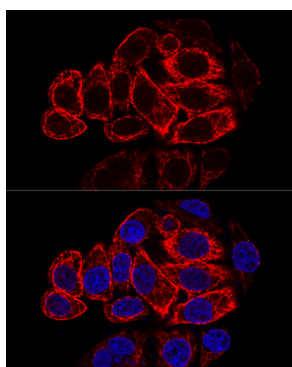
Secondary antibody: HRP-conjugated Goat anti-Rabbit IgG (H+L) (AS014) at 1:10000 dilution.

Lysates/proteins: 25µg per lane.

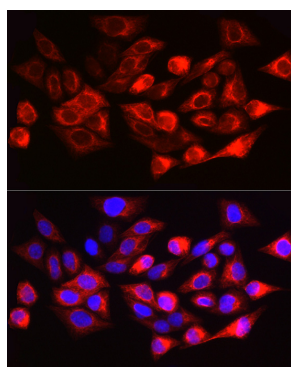
Blocking buffer: 3% nonfat dry milk in TBST.

Detection: ECL Basic Kit (RM00020).

Exposure time: 60s.



Confocal immunofluorescence analysis of HeLa cells using Cytokeratin 17 (KRT17) Rabbit pAb (A0123) at dilution of 1:200. Blue: DAPI for nuclear staining.



Immunofluorescence analysis of HeLa cells using Cytokeratin 17 (KRT17) Rabbit pAb (A0123) at dilution of 1:200 (40x lens). Secondary antibody: Cy3-conjugated Goat anti-Rabbit IgG (H+L) (AS007) at 1:500 dilution. Blue: DAPI for nuclear staining.