

BCL2A1 Rabbit pAb

Catalog No.: A0134 **2 Publications**

Basic Information

Observed MW

Refer to figures

Calculated MW

20kDa

Category

Primary antibody

Applications

ELISA,WB,IF/ICC

Cross-Reactivity

Human

Background

This gene encodes a member of the BCL-2 protein family. The proteins of this family form hetero- or homodimers and act as anti- and pro-apoptotic regulators that are involved in a wide variety of cellular activities such as embryonic development, homeostasis and tumorigenesis. The protein encoded by this gene is able to reduce the release of pro-apoptotic cytochrome c from mitochondria and block caspase activation. This gene is a direct transcription target of NF-kappa B in response to inflammatory mediators, and is up-regulated by different extracellular signals, such as granulocyte-macrophage colony-stimulating factor (GM-CSF), CD40, phorbol ester and inflammatory cytokine TNF and IL-1, which suggests a cytoprotective function that is essential for lymphocyte activation as well as cell survival. Alternatively spliced transcript variants encoding different isoforms have been found for this gene.

Recommended Dilutions

WB	1:500 - 1:2000
IF/ICC	1:50 - 1:200

Immunogen Information

Gene ID

597

Swiss Prot

Q16548

Immunogen

A synthetic peptide corresponding to a sequence within amino acids 70-150 of human BCL2A1 (NP_004040.1).

Synonyms

GRS; ACC1; ACC2; BFL1; ACC-1; ACC-2; HBPA1; BCL2L5; BCL2A1

Contact

☎ | 400-999-6126

✉ | cn.market@abclonal.com.cn

🌐 | www.abclonal.com.cn

Product Information

Source

Rabbit

Isotype

IgG

Purification

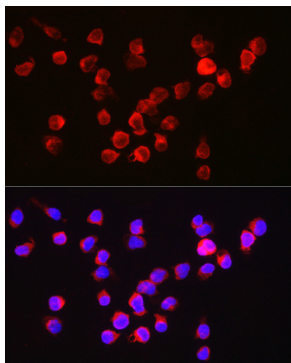
Affinity purification

Storage

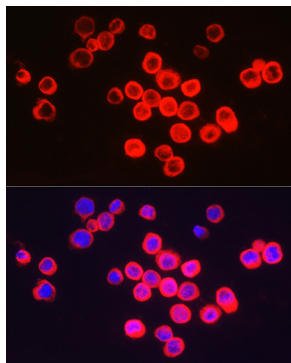
Store at -20°C. Avoid freeze / thaw cycles.

Buffer: PBS with 0.05% proclin300,50% glycerol,pH7.3.

Validation Data



Immunofluorescence analysis of Jurkat cells using BCL2A1 Rabbit pAb (A0134) at dilution of 1:200 (40x lens). Blue: DAPI for nuclear staining.



Immunofluorescence analysis of THP-1 cells using BCL2A1 Rabbit pAb (A0134) at dilution of 1:200 (40x lens). Blue: DAPI for nuclear staining.