

# CaMKII Rabbit mAb

Catalog No.: A0198

Recombinant

6 Publications

## Basic Information

**Observed MW**

50kDa/55kDa/60kDa

**Calculated MW**

73kDa

**Category**

Primary antibody

**Applications**

ELISA, WB, IHC-P

**Cross-Reactivity**

Human, Mouse, Rat

**CloneNo number**

ARC1814

## Background

The product of this gene belongs to the serine/threonine protein kinase family and to the Ca(2+)/calmodulin-dependent protein kinase subfamily. Calcium signaling is crucial for several aspects of plasticity at glutamatergic synapses. In mammalian cells, the enzyme is composed of four different chains: alpha, beta, gamma, and delta. The product of this gene is a beta chain. It is possible that distinct isoforms of this chain have different cellular localizations and interact differently with calmodulin. Alternative splicing results in multiple transcript variants.

## Recommended Dilutions

WB 1:500 - 1:1000

IHC-P 1:50 - 1:200

## Immunogen Information

**Gene ID**

816

**Swiss Prot**

Q13554

**Immunogen**

A synthetic peptide corresponding to a sequence within amino acids 200-300 of human CaMKII (NP\_741960.1).

**Synonyms**

CAM2; CAMK2; CAMKB; MRD54; CaMKIIbeta; CaMKII

## Contact

 | 400-999-6126 | [cn.market@abclonal.com.cn](mailto:cn.market@abclonal.com.cn) | [www.abclonal.com.cn](http://www.abclonal.com.cn)

## Product Information

**Source**

Rabbit

**Isotype**

IgG

**Purification**

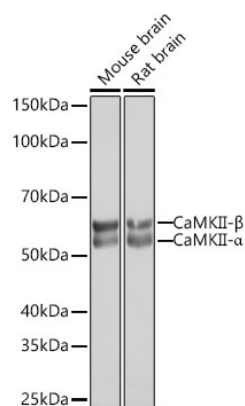
Affinity purification

**Storage**

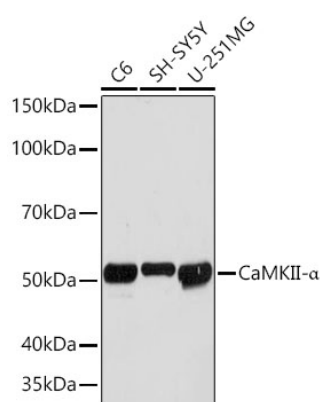
Store at -20°C. Avoid freeze / thaw cycles.

Buffer: PBS with 0.05% proclin300, 0.05% BSA, 50% glycerol, pH7.3.

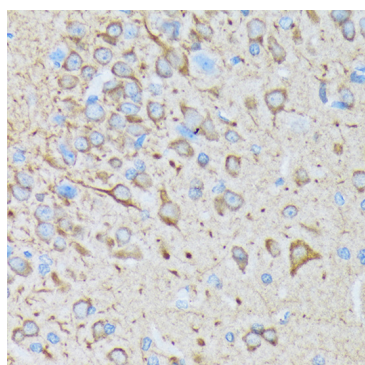
## Validation Data



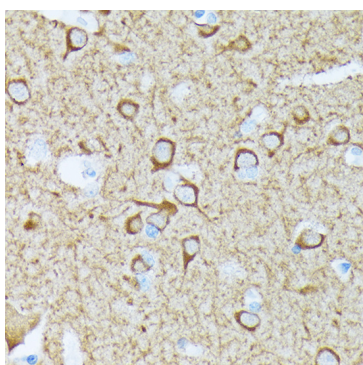
Western blot analysis of extracts of various cell lines, using CaMKII Rabbit mAb (A0198) at 1:1000 dilution.  
Secondary antibody: HRP Goat Anti-Rabbit IgG (H+L) (AS014) at 1:10000 dilution.  
Lysates/proteins: 25µg per lane.  
Blocking buffer: 3% nonfat dry milk in TBST.  
Detection: ECL Basic Kit (RM00020).  
Exposure time: 5s.



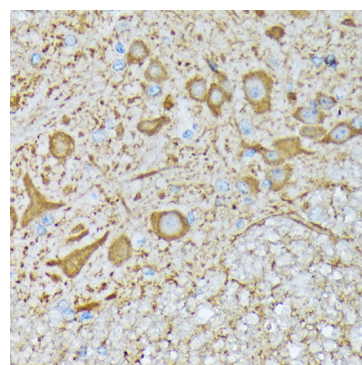
Western blot analysis of extracts of various cell lines, using CaMKII Rabbit mAb (A0198) at 1:1000 dilution.  
Secondary antibody: HRP Goat Anti-Rabbit IgG (H+L) (AS014) at 1:10000 dilution.  
Lysates/proteins: 25µg per lane.  
Blocking buffer: 3% nonfat dry milk in TBST.  
Detection: ECL Basic Kit (RM00020).  
Exposure time: 90s.



Immunohistochemistry analysis of paraffin-embedded rat brain using CaMKII Rabbit mAb (A0198) at dilution of 1:100 (40x lens). Perform microwave antigen retrieval with 10 mM Tris/EDTA buffer pH 9.0 before commencing with IHC staining protocol.



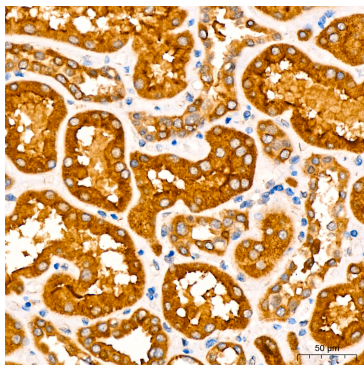
Immunohistochemistry analysis of paraffin-embedded human brain using CaMKII Rabbit mAb (A0198) at dilution of 1:100 (40x lens). Perform microwave antigen retrieval with 10 mM Tris/EDTA buffer pH 9.0 before commencing with IHC staining protocol.



Immunohistochemistry analysis of paraffin-embedded mouse spinal cord using CaMKII Rabbit mAb (A0198) at dilution of 1:100 (40x lens). Perform microwave antigen retrieval with 10 mM Tris/EDTA buffer pH 9.0 before commencing with IHC staining protocol.

## Validation Data

---



Immunohistochemistry analysis of CaMKII in paraffin-embedded human kidney tissue using CaMKII Rabbit mAb (A0198) at a dilution of 1:200 (40x lens). High pressure antigen retrieval was performed with 0.01 M Tris-EDTA buffer (pH 9.0) prior to IHC staining.