

ATF4 Rabbit pAb

Catalog No.: A0201 **33 Publications**

Basic Information

Observed MW

50kDa

Calculated MW

39kDa

Category

Primary antibody

Applications

WB,IF/ICC,(ELISA)

Cross-Reactivity

Human

Background

This gene encodes a transcription factor that was originally identified as a widely expressed mammalian DNA binding protein that could bind a tax-responsive enhancer element in the LTR of HTLV-1. The encoded protein was also isolated and characterized as the cAMP-response element binding protein 2 (CREB-2). The protein encoded by this gene belongs to a family of DNA-binding proteins that includes the AP-1 family of transcription factors, cAMP-response element binding proteins (CREBs) and CREB-like proteins. These transcription factors share a leucine zipper region that is involved in protein-protein interactions, located C-terminal to a stretch of basic amino acids that functions as a DNA binding domain. Two alternative transcripts encoding the same protein have been described. Two pseudogenes are located on the X chromosome at q28 in a region containing a large inverted duplication.

Recommended Dilutions

WB 1:500 - 1:2000

IF/ICC 1:50 - 1:200

ELISA Recommended starting concentration is 1 µg/mL. Please optimize the concentration based on your specific assay requirements.

Immunogen Information

Gene ID

468

Swiss Prot

P18848

Immunogen

Recombinant fusion protein containing a sequence corresponding to amino acids 1-351 of human ATF4 (NP_001666.2).

Synonyms

CREB2; TXREB; CREB-2; TAXREB67; ATF4

Contact

 | 400-999-6126 | cn.market@abclonal.com.cn | www.abclonal.com.cn

Product Information

Source

Rabbit

Isotype

IgG

Purification

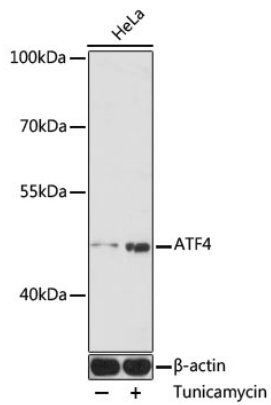
Affinity purification

Storage

Store at -20°C. Avoid freeze / thaw cycles.

Buffer: PBS with 0.02% sodium azide,50% glycerol,pH7.3.

Validation Data



Western blot analysis of lysates from HeLa cells, using ATF4 Rabbit pAb (A0201) at 1:1000 dilution. HeLa cells were treated by tunicamycin (2 μ g/mL) for 8 hours.

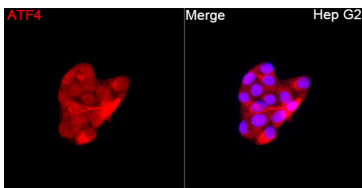
Secondary antibody: HRP-conjugated Goat anti-Rabbit IgG (H+L) (AS014) at 1:10000 dilution.

Lysates/proteins: 25 μ g per lane.

Blocking buffer: 3% nonfat dry milk in TBST.

Detection: ECL Enhanced Kit (RM00021).

Exposure time: 3min.



Immunofluorescence analysis of Hep G2 cells using ATF4 Rabbit pAb (A0201) at a dilution of 1:100 (40x lens). Secondary antibody: Cy3-conjugated Goat anti-Rabbit IgG (H+L) (AS007) at 1:500 dilution. Blue: DAPI for nuclear staining.