

Caspase-3 Rabbit pAb

Catalog No.: A0214

54 Publications

Basic Information

Observed MW

35kDa

Calculated MW

32kDa

Category

Primary antibody

Applications

ELISA, WB, IF/ICC

Cross-Reactivity

Human, Mouse, Rat

Background

The protein encoded by this gene is a cysteine-aspartic acid protease that plays a central role in the execution-phase of cell apoptosis. The encoded protein cleaves and inactivates poly(ADP-ribose) polymerase while it cleaves and activates sterol regulatory element binding proteins as well as caspases 6, 7, and 9. This protein itself is processed by caspases 8, 9, and 10. It is the predominant caspase involved in the cleavage of amyloid-beta 4A precursor protein, which is associated with neuronal death in Alzheimer's disease.

Recommended Dilutions

WB 1:500 - 1:1000

IF/ICC 1:50 - 1:300

Immunogen Information

Gene ID

836

Swiss Prot

P42574

Immunogen

Recombinant fusion protein containing a sequence corresponding to amino acids 55-160 of human Caspase-3 (NP_004337.2).

Synonyms

CPP32; SCA-1; CPP32B

Contact

☎ | 400-999-6126

✉ | cn.market@abclonal.com.cn

🌐 | www.abclonal.com.cn

Product Information

Source

Rabbit

Isotype

IgG

Purification

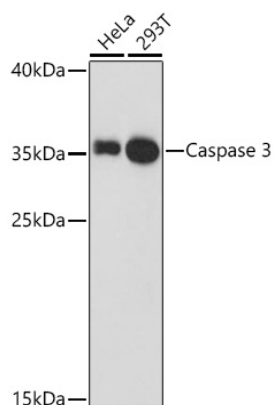
Affinity purification

Storage

Store at -20°C. Avoid freeze / thaw cycles.

Buffer: PBS with 0.05% proclin300, 50% glycerol, pH7.3.

Validation Data



Western blot analysis of extracts of various cell lines, using Caspase 3 antibody (A0214) at 1:1000 dilution.

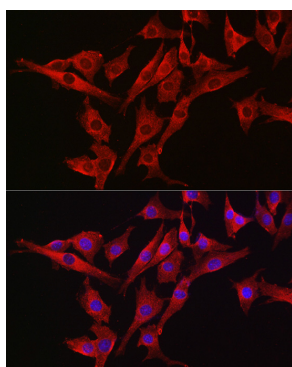
Secondary antibody: HRP Goat Anti-Rabbit IgG (H+L) (AS014) at 1:10000 dilution.

Lysates/proteins: 25µg per lane.

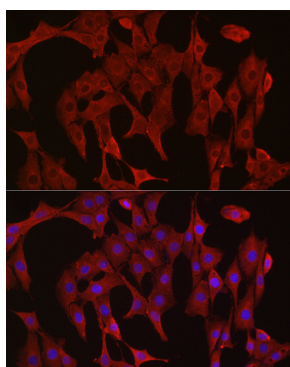
Blocking buffer: 3% nonfat dry milk in TBST.

Detection: ECL Basic Kit (RM00020).

Exposure time: 90s.



Immunofluorescence analysis of NIH/3T3 cells using Caspase 3 antibody (A0214) at dilution of 1:300 (40x lens). Blue: DAPI for nuclear staining.



Immunofluorescence analysis of PC-12 cells using Caspase 3 antibody (A0214) at dilution of 1:300 (40x lens). Blue: DAPI for nuclear staining.