

Raf1 Rabbit pAb

Catalog No.: A0223 **4 Publications**

Basic Information

Observed MW

73kDa

Calculated MW

73kDa

Category

Primary antibody

Applications

ELISA, WB, IHC-P, IF/ICC

Cross-Reactivity

Human, Mouse, Rat

Background

This gene is the cellular homolog of viral raf gene (v-raf). The encoded protein is a MAP kinase kinase kinase (MAP3K), which functions downstream of the Ras family of membrane associated GTPases to which it binds directly. Once activated, the cellular RAF1 protein can phosphorylate to activate the dual specificity protein kinases MEK1 and MEK2, which in turn phosphorylate to activate the serine/threonine specific protein kinases, ERK1 and ERK2. Activated ERKs are pleiotropic effectors of cell physiology and play an important role in the control of gene expression involved in the cell division cycle, apoptosis, cell differentiation and cell migration. Mutations in this gene are associated with Noonan syndrome 5 and LEOPARD syndrome 2.

Recommended Dilutions

| | |
|---------------|----------------|
| WB | 1:500 - 1:1000 |
| IHC-P | 1:50 - 1:200 |
| IF/ICC | 1:50 - 1:200 |

Immunogen Information

Gene ID

5894

Swiss Prot

P04049

Immunogen

Recombinant fusion protein containing a sequence corresponding to amino acids 190-350 of human Raf1 (NP_002871.1).

Synonyms

NS5; CRAF; Raf-1; c-Raf; CMD1NN; Raf1

Contact

 | 400-999-6126 | cn.market@abclonal.com.cn | www.abclonal.com.cn

Product Information

Source

Rabbit

Isotype

IgG

Purification

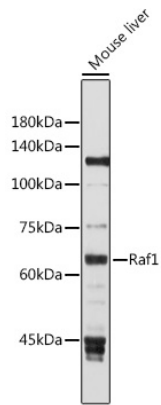
Affinity purification

Storage

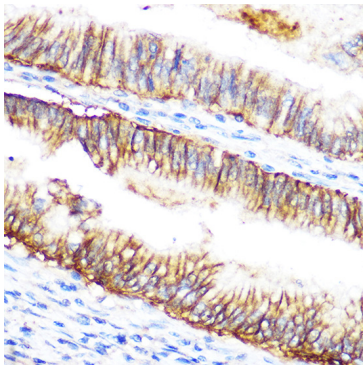
Store at -20°C. Avoid freeze / thaw cycles.

Buffer: PBS with 0.02% sodium azide, 50% glycerol, pH7.3.

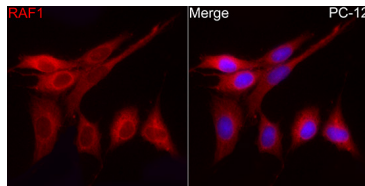
Validation Data



Western blot analysis of extracts of Mouse liver, using Raf1 antibody (A0223) at 1:1000 dilution.
Secondary antibody: HRP Goat Anti-Rabbit IgG (H+L) (AS014) at 1:10000 dilution.
Lysates/proteins: 25µg per lane.
Blocking buffer: 3% nonfat dry milk in TBST.
Detection: ECL Basic Kit (RM00020).
Exposure time: 30s.



Immunohistochemistry analysis of paraffin-embedded human colon carcinoma using Raf1 Rabbit pAb (A0223) at dilution of 1:100 (40x lens). Perform microwave antigen retrieval with 10 mM Tris/EDTA buffer pH 9.0 before commencing with IHC staining protocol.



Immunofluorescence analysis of PC-12 cells using Raf1 Rabbit pAb (A0223) at dilution of 1:200 (40x lens). Blue: DAPI for nuclear staining.