

# [KD Validated] HDAC1 Rabbit pAb

Catalog No.: A0238

21 Publications

## Basic Information

### Observed MW

62kDa/

### Calculated MW

55kDa

### Category

Primary antibody

### Applications

WB, IHC-P, IF/ICC, IP, ELISA

### Cross-Reactivity

Human, Mouse, Rat

## Background

Histone acetylation and deacetylation, catalyzed by multisubunit complexes, play a key role in the regulation of eukaryotic gene expression. The protein encoded by this gene belongs to the histone deacetylase/acuc/apha family and is a component of the histone deacetylase complex. It also interacts with retinoblastoma tumor-suppressor protein and this complex is a key element in the control of cell proliferation and differentiation. Together with metastasis-associated protein-2, it deacetylates p53 and modulates its effect on cell growth and apoptosis.

## Recommended Dilutions

**WB** 1:500 - 1:1000

**IHC-P** 1:50 - 1:200

**IF/ICC** 1:50 - 1:100

**IP** 0.5µg-4µg antibody for  
200µg-400µg extracts of  
whole cells

**ELISA** Recommended starting  
concentration is 1 µg/mL.  
Please optimize the  
concentration based on  
your specific assay  
requirements.

## Immunogen Information

### Gene ID

3065

### Swiss Prot

Q13547

### Immunogen

Synthetic peptide. This information is considered to be commercially sensitive.

### Synonyms

HD1; RPD3; KDAC1; GON-10; RPD3L1; C1

## Product Information

### Source

Rabbit

### Isotype

IgG

### Purification

Affinity purification

### Storage

Store at -20°C. Avoid freeze / thaw cycles.

Buffer: PBS containing 50% glycerol, preserved with proclin300 or sodium azide (as specified on the Certificate of Analysis), pH 7.3.

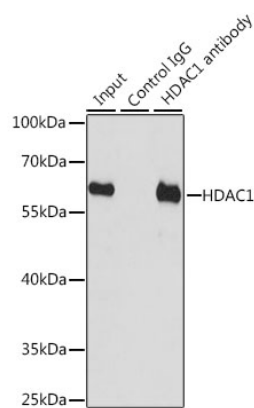
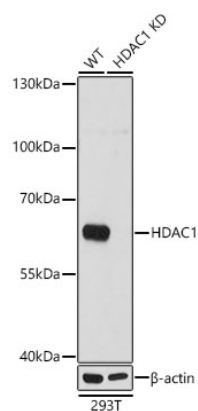
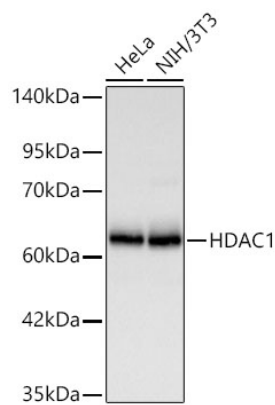
## Contact

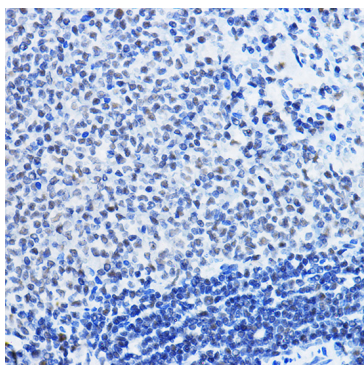
☎ | 400-999-6126

✉ | [cn.market@abclonal.com.cn](mailto:cn.market@abclonal.com.cn)

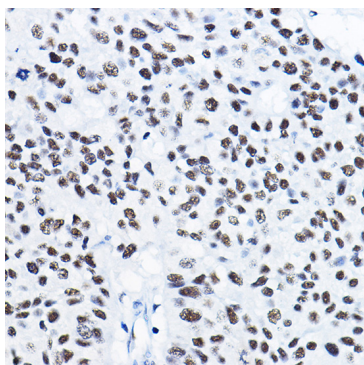
🌐 | [www.abclonal.com.cn](http://www.abclonal.com.cn)

Validation Data

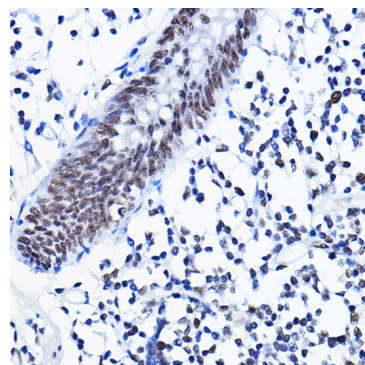




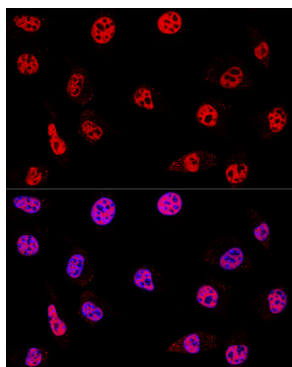
Immunohistochemistry analysis of paraffin-embedded Rat spleen using [KD Validated] HDAC1 Rabbit pAb (A0238) at dilution of 1:50 (40x lens). High pressure antigen retrieval performed with 0.01M Citrate buffer (pH 6.0) prior to IHC staining.



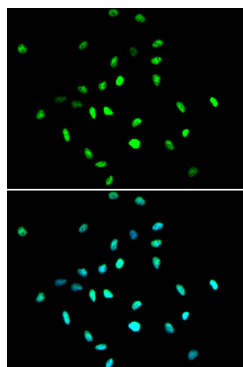
Immunohistochemistry analysis of paraffin-embedded Human lung cancer using [KD Validated] HDAC1 Rabbit pAb (A0238) at dilution of 1:50 (40x lens). High pressure antigen retrieval performed with 0.01M Citrate buffer (pH 6.0) prior to IHC staining.



Immunohistochemistry analysis of paraffin-embedded Human colon using [KD Validated] HDAC1 Rabbit pAb (A0238) at dilution of 1:50 (40x lens). High pressure antigen retrieval performed with 0.01M Citrate buffer (pH 6.0) prior to IHC staining.



Confocal immunofluorescence analysis of L929 cells using [KD Validated] HDAC1 Rabbit pAb (A0238) at dilution of 1:200. Blue: DAPI for nuclear staining.



Immunofluorescence analysis of A549 cells using [KD Validated] HDAC1 Rabbit pAb (A0238). Secondary antibody: Cy3-conjugated Goat anti-Rabbit IgG (H+L) (AS007) at 1:500 dilution. Blue: DAPI for nuclear staining.