

# IRS1 Rabbit pAb

Catalog No.: A0245 **17 Publications**

## Basic Information

### Observed MW

180kDa

### Calculated MW

132kDa

### Category

Primary antibody

### Applications

WB, IHC-P, IF/ICC, ELISA

### Cross-Reactivity

Human, Mouse, Rat

## Background

This gene encodes a protein which is phosphorylated by insulin receptor tyrosine kinase. Mutations in this gene are associated with type II diabetes and susceptibility to insulin resistance.

## Recommended Dilutions

<b>WB</b>	1:500 - 1:1000
<b>IHC-P</b>	1:50 - 1:200
<b>IF/ICC</b>	1:50 - 1:200
<b>ELISA</b>	Recommended starting concentration is 1 µg/mL. Please optimize the concentration based on your specific assay requirements.

## Contact

	400-999-6126
	<a href="mailto:cn.market@abclonal.com.cn">cn.market@abclonal.com.cn</a>
	<a href="http://www.abclonal.com.cn">www.abclonal.com.cn</a>

## Immunogen Information

### Gene ID

3667

### Swiss Prot

P35568

### Immunogen

Recombinant protein (or fragment). This information is considered to be commercially sensitive.

### Synonyms

HIRS-1; IRS1

## Product Information

### Source

Rabbit

### Isotype

IgG

### Purification

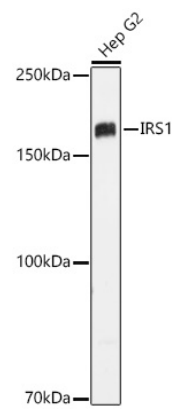
Affinity purification

### Storage

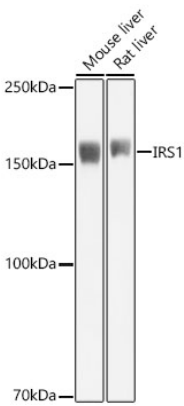
Store at -20°C. Avoid freeze / thaw cycles.

Buffer: PBS containing 50% glycerol, preserved with proclin300 or sodium azide (as specified on the Certificate of Analysis), pH7.3.

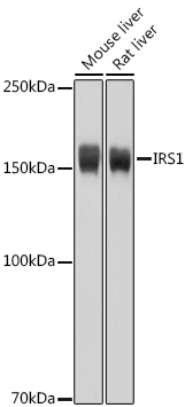
# Validation Data



Western blot analysis of lysates from Hep G2 cells using IRS1 Rabbit pAb (A0245) at 1:1000 dilution.  
Secondary antibody: HRP-conjugated Goat anti-Rabbit IgG (H+L) (AS014) at 1:10000 dilution.  
Lysates/proteins: 25 µg per lane.  
Blocking buffer: 3% nonfat dry milk in TBST.  
Detection: ECL Basic Kit (RM00020).  
Exposure time: 30s.

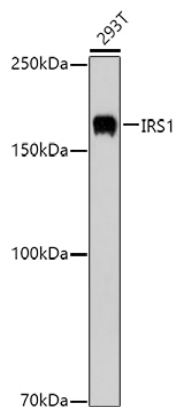


Western blot analysis of various lysates using IRS1 Rabbit pAb (A0245) at 1:1000 dilution.  
Secondary antibody: HRP-conjugated Goat anti-Rabbit IgG (H+L) (AS014) at 1:10000 dilution.  
Lysates / proteins: 25 µg per lane.  
Blocking buffer: 3 % nonfat dry milk in TBST.  
Detection: ECL Basic Kit (RM00020).  
Exposure time: 1s.

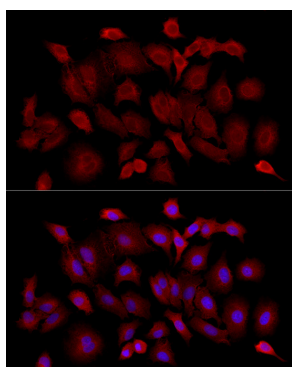


Western blot analysis of various lysates using IRS1 Rabbit pAb (A0245) at 1:1000 dilution.  
Secondary antibody: HRP-conjugated Goat anti-Rabbit IgG (H+L) (AS014) at 1:10000 dilution.  
Lysates/proteins: 25µg per lane.  
Blocking buffer: 3% nonfat dry milk in TBST.  
Detection: ECL Basic Kit (RM00020).  
Exposure time: 1s.

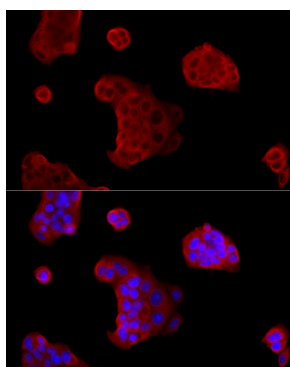
## Validation Data



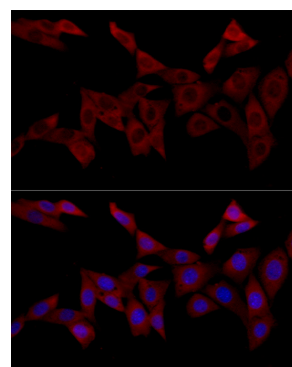
Western blot analysis of lysates from 293T cells, using IRS1 Rabbit pAb (A0245) at 1:1000 dilution. Secondary antibody: HRP-conjugated Goat anti-Rabbit IgG (H+L) (AS014) at 1:10000 dilution. Lysates/proteins: 25µg per lane. Blocking buffer: 3% nonfat dry milk in TBST. Detection: ECL Basic Kit (RM00020). Exposure time: 10s.



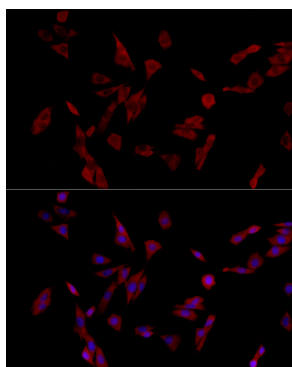
Immunofluorescence analysis of A-549 cells using IRS1 Rabbit pAb (A0245) at dilution of 1:100 (40x lens). Secondary antibody: Cy3-conjugated Goat anti-Rabbit IgG (H+L) (AS007) at 1:500 dilution. Blue: DAPI for nuclear staining.



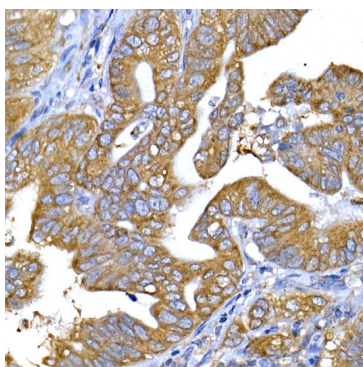
Immunofluorescence analysis of MCF7 cells using IRS1 Rabbit pAb (A0245) at dilution of 1:100 (40x lens). Secondary antibody: Cy3-conjugated Goat anti-Rabbit IgG (H+L) (AS007) at 1:500 dilution. Blue: DAPI for nuclear staining.



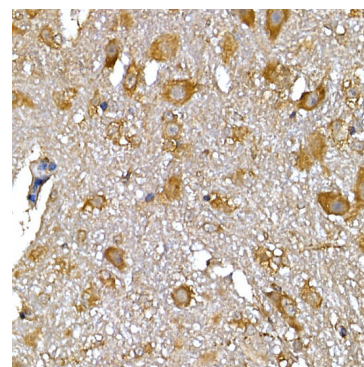
Immunofluorescence analysis of NIH/3T3 cells using IRS1 Rabbit pAb (A0245) at dilution of 1:100 (40x lens). Secondary antibody: Cy3-conjugated Goat anti-Rabbit IgG (H+L) (AS007) at 1:500 dilution. Blue: DAPI for nuclear staining.



Immunofluorescence analysis of PC-12 cells using IRS1 Rabbit pAb (A0245) at dilution of 1:100 (40x lens). Secondary antibody: Cy3-conjugated Goat anti-Rabbit IgG (H+L) (AS007) at 1:500 dilution. Blue: DAPI for nuclear staining.



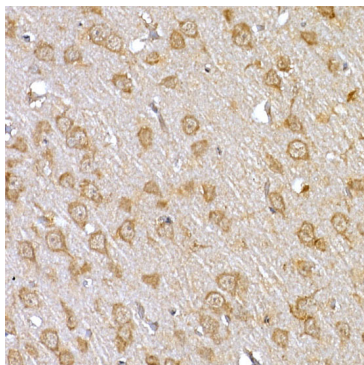
Immunohistochemistry analysis of paraffin-embedded Human lung cancer using IRS1 Rabbit pAb (A0245) at dilution of 1:100 (40x lens). High pressure antigen retrieval performed with 0.01M Citrate buffer (pH 6.0) prior to IHC staining.



Immunohistochemistry analysis of paraffin-embedded Mouse spinal cord using IRS1 Rabbit pAb (A0245) at dilution of 1:100 (40x lens). High pressure antigen retrieval performed with 0.01M Citrate buffer (pH 6.0) prior to IHC staining.

## Validation Data

---



Immunohistochemistry analysis of paraffin-embedded Rat brain using IRS1 Rabbit pAb (A0245) at dilution of 1:100 (40x lens). High pressure antigen retrieval performed with 0.01M Citrate buffer (pH 6.0) prior to IHC staining.